

Research

Local and regional specialization in plant–pollinator networks

Daniel W. Carstensen, Kristian Trøjelsgaard, Jeff Ollerton and Leonor Patricia C. Morellato

D. W. Carstensen (http://orcid.org/0000-0003-3697-1688) (daniel.carstensen@gmail.com) and L. P. C. Morellato, Phenology Lab, Inst. of Biosciences, Dept of Botany, São Paulo State Univ. (UNESP), Rio Claro, São Paulo, Brazil. DWC also at: Center for Macroecology, Evolution and Climate, Nat. Hist. Mus. of Denmark, Univ. of Copenhagen, Copenhagen, Denmark. – K. Trøjelsgaard, Dept of Chemistry and Bioscience, Aalborg Univ., Aalborg, Denmark. – J. Ollerton, Faculty of Arts, Science and Technology, Univ. of Northampton, UK.

Oikos

127: 531–537, 2018

doi: 10.1111/oik.04436

Subject Editor: Anna Traveset

Editor-in-Chief: Dries Bonte

Accepted 9 October 2017

Specialization of species is often studied in ecology but its quantification and meaning is disputed. More recently, ecological network analysis has been widely used as a tool to quantify specialization, but here its true meaning is also debated. However, irrespective of the tool used, the geographic scale at which specialization is measured remains central. Consequently, we use data sets of plant–pollinator networks from Brazil and the Canary Islands to explore specialization at local and regional scales. We ask how local specialization of a species is related to its regional specialization, and whether or not species tend to interact with a non-random set of partners in local communities. Local and regional specialization were strongly correlated around the 1:1 line, indicating that species conserve their specialization levels across spatial scales. Furthermore, most plants and pollinators also showed link conservatism repeatedly across local communities, and thus seem to be constrained in their fundamental niche. However, some species are more constrained than others, indicating true specialists. We argue that several geographically separated populations should be evaluated in order to provide a robust evaluation of species specialization.

Introduction

The Earth's biodiversity is shaped by a plethora of interactions between species that may range from being relatively specialized to relatively generalized, and the exact nature of these interactions depend upon a variety of ecological and evolutionary factors. Many of these types of interactions are common and ecologically vital; pollination by animals for example is the norm for an estimated 87.5% of the ca 352 000 species of flowering plants (Ollerton et al. 2011). Extensive work based on visitation data between plants and pollinators indicate that such interactions tend to be more generalized than previously thought, even for tropical systems (Waser et al. 1996, Ollerton and Cranmer 2002, Schleuning et al. 2012). However, recent studies, considering visitation frequency and service effectiveness, suggest stronger fidelity between interaction partners and that binary visitation data might overestimate generalization levels (King et al. 2013, Rosas-Guerrero et al. 2014 – though see Ollerton et al. 2015). Furthermore, several studies indicate that species can appear

as generalists while actually being composed of specialist populations, or even generalist populations composed of specialist individuals (Fox and Morrow 1981, Bolnick et al. 2002, Araujo et al. 2008, Devictor et al. 2010, Dupont et al. 2011, Tur et al. 2014). Such studies suggest that phylogenetic and geographic scale are highly relevant when studying specialization, and sampling of multiple populations is necessary to reliably determine the niche breadth of a species to account for cross-community variation (Fox and Morrow 1981, Ollerton et al. 2007, 2009, Carstensen et al. 2014, Poisot et al. 2015, Trøjelsgaard et al. 2015).

The fundamental taxonomic niche of a species describes the set of potential interaction partners as determined by functional traits (Junker et al. 2013). Conversely, the realized taxonomic niche is the subset of species within a given community with which the focal species interacts. Thus, while functional traits do not necessarily enable us to predict the occurrence of a given interaction, they do partly define the set of possible interactions (Morales-Castilla et al. 2015) and trait complementarity does seem to consistently govern general interaction patterns within communities (Carstensen et al. 2016). The fundamental and realized niche concepts are related to specialization at the level of species and populations respectively, and the fundamental niche is seldom fully realized in any single local community because of differences in relative abundances, species composition and other biotic and abiotic factors (Carstensen et al. 2014, Trøjelsgaard et al. 2015, Burkle et al. 2016).

Here, we explore species specialization across interacting plants and pollinators within two contrasting regions: Brazilian campo rupestre (rupestrian grasslands) and the Canary Islands. Both datasets consist of seven spatially separated community-level plant–pollinator networks, sampled in a standardized way within their regions. Using these data we explore the relationship between local and regional specialization, and investigate whether this relationship differ between these two contrasting study regions, assuming the ecological specialization framework (Armbruster 2017). Specifically we ask: 1) are local and regional measures of specialization correlated? 2) Do species interact locally with a non-random subset of the available species in the community?

We expect that the specialization level of a species is conserved across populations, but that the identity of interaction partners might change. If so, species would appear more generalized at the regional level compared to the local level.

Methods

Study sites and field observations

Data were collected in October–December 2012 from seven sites of rupestrian grasslands, or campo rupestre, in the National Park of Serra do Cipó, SE Brazil (Carstensen et al. 2014, 2016). Campo rupestre is a species-rich vegetation of mostly shrubs and herbs associated with rocky outcrops

surrounded by sandy and stony grasslands (Silveira et al. 2016). Sites were 1.4–8.5 km apart within an altitudinal range of 1073–1260 m a.s.l. One site was sampled per day with a weekly rotation among sites. Attempting to observe all flowering plant species in each site, plant individuals were observed in 15 min intervals (totalling 252 h of observation), recording all visitors touching the reproductive floral parts (for more details see Carstensen et al. 2014). For each 15-min interval randomly selected plant individuals were observed, and if individuals of the same species were in close proximity of each other they were often surveyed simultaneously. Flower visitors were collected for taxonomic identifications by experts. For each site, the data were summarized in a quantitative interaction matrix expressing the frequency of interactions between pairs of plants and pollinators. This resulted in seven spatially separated networks with a total of 101 plant species and 201 pollinator species.

Data were also collected from five islands within the Canarian archipelago (El Hierro, La Gomera, Tenerife (two sites), Gran Canaria and Fuerteventura) and a single site in Western Sahara located at the West African coast close to the Canary Islands (Trøjelsgaard et al. 2013). In total this gave us seven spatially separated pollination networks from habitats characterized as semi-arid and dominated by shrubs. The Canary Island networks were 53–455 km from each other and separated by ocean, except the two sampling sites at Tenerife, which, conversely, were separated by El Pico del Teide (3718 m a.s.l.). All flowering perennial plant species were surveyed for flower visitors in intervals of 15 min (totalling 296 h of observation) in January–March 2010 through flower-based focal observations in a similar way as for the Brazilian data set (for more details see Trøjelsgaard et al. 2013). Most plant species were observed in 15-min intervals approximately 8 times (mean = 7.0, SD = 1.8). Randomly selected individuals were preferably chosen for each of the individual 15-min surveys, although low abundance of some species precluded this practice. Sometimes multiple individuals of the same species were surveyed simultaneously depending on their spatial aggregations, and also depending on the total number of flowers per individual. Approximately 1300 flower visitors were collected for taxonomic verifications by entomological experts, allowing species identification of many pollinators, while some were grouped as morphospecies. Overall we scored interactions between 39 plant species and 249 pollinator species and, similar to the Brazilian dataset, all seven networks from the Canary Islands were quantitative interaction matrices expressing the frequency of interactions between plants and pollinators.

Specialization and interaction richness

For each plant and pollinator species observed in more than one site, we defined a metaweb of species s (Dunne 2006) as the network consisting of all species occurring in the sites in which s occurs, as well as all the interactions between them. In other words, it is the regional network of interactions for species s and its co-occurring species. We

quantified specialization using the index d'_s , which describes the deviation of interactions from what would be expected under neutral conditions. Instead of counting the number of interaction partners, d'_s measures the exclusiveness of a species' interactions and is insensitive to variation in observation frequencies across species (Blüthgen et al. 2006). Specialization, d'_s , was calculated using the *dfun* function in the package 'Bipartite' in R (Dormann 2011); and for all species we calculated both a regional specialization level using the metaweb of species s ($d'_{s,meta}$) as well as an average local specialization level using the local networks in which species s occurred ($d'_{s,local}$).

We tested the correlation between local and regional specialization using the Pearson correlation coefficient. Through simple linear regression, we further tested whether the regional specialization was affected by the number of sites in which a species occurred, or rather, the number of potential interaction partners with which it co-occurred across the region.

To quantify if regional interaction richness of a species differed from what could be expected if species interacted randomly with the available set of partners, we first calculated the regional degree for each species, γ_s , which is the total number of different interaction partners across all sites in which the species was observed (i.e. the degree in the metaweb for species s). We then compared the empirical γ_s with a null model where the identity of partners in the local networks was randomized while conserving the local number of interactions for each species. New interaction partners were drawn with a probability proportional to their abundance (measured as total number of interactions, i.e. the marginal sums in the quantitative interaction matrix) among all potential partner species in a local community, and random partners were drawn with replacement until the empirical number of interactions was reached. In this way, the total number of local interactions (i.e. the marginal sum) was retained, but the regional degree was allowed to change as species were allocated new interaction partners among all potential partners at a local site. This procedure was repeated 1000 times for each species, which allowed us to calculate a mean ($\gamma_{s,random}$) and standard deviation (SD_{random}) for each species. Subsequently we compared empirical regional species degrees (γ_s) with the randomized regional degrees ($\gamma_{s,random}$) by using z-scores $[(\gamma_s - \gamma_{s,random})/SD_{random}]$. If the z-score was less than -1.96 , or larger than 1.96 , the difference between the empirical and random regional degree was deemed statistically significant. Moreover, negative values suggest that a species is more constrained in its choice of interaction partners than if partner identities were determined solely by availability (abundance) (we call this 'link conservatism'), while positive values suggest that the species is more opportunistic than expected (we call this 'link opportunism'). By incorporating species abundance as a way of selecting partners in the null-model, the procedure leans towards the neutral perspective which assumes that interactions between species is largely determined by species abundance (Canard et al. 2014, Poisot et al. 2015). It is important to note that the null-model ignores phenological

or morphological constraints (Olesen et al. 2011), and therefore may overestimate the availability of potential partners.

Finally, we tested for a correlation between the z-scores (link conservatism) and $d'_{s,meta}$ (the regional specialization, or exclusiveness) in order to examine how the two measurements coincide. While $d'_{s,meta}$ measures the deviation of interactions from neutrality based on the availability of partners in the metaweb, the z-scores measure the deviation of the interactions in the metaweb from a null model where each local network is randomized before aggregating the metaweb. These two measures thus quantify specialization, or conservatism, from slightly different approaches and should be negatively correlated. All analyses were done in R ver. 3.2.0 (<www.r-project.org>).

Data deposition

Data available from the Dryad Digital Repository: <<http://dx.doi.org/10.5061/dryad.c45cd>> (Carstensen et al. 2017).

Results

Regional ($d'_{s,meta}$) and local ($d'_{s,local}$) specialization were significantly and strongly correlated in the Brazilian networks for both plants and pollinators (Pearson correlation, $r=0.76$ and 0.83 respectively, $p < 0.001$, Fig. 1A) as well as in the Canary Islands networks (Pearson correlation, $r=0.76$ and 0.89 respectively, $p < 0.001$, Fig. 1B). In Brazil, the number of co-occurring species (i.e. the number of potential interaction partners in the metaweb) had no effect on regional specialization values for plants ($p > 0.7$, $R^2 < 0.01$), but correlated significantly with regional specialization of pollinators, albeit with a very poor fit ($p < 0.05$, $R^2 = 0.05$, indicated by size of data points in Fig. 1A). At the Canary Islands the number of co-occurring species had no effect on regional specialization for neither pollinators nor plants ($p > 0.2$, $R^2 < 0.01$).

The null model analysis showed similar results for the Brazilian and Canary Islands networks (Fig. 2). In both systems, the majority of the plant species showed link conservatism because 81% (Brazil) and 57% (Canary Islands) of the plants had significantly fewer regional interaction partners than expected if partner identity were determined solely by availability (abundance). That is, these species tend to conserve their interaction partners across sites. The majority of the pollinators also showed link conservatism in Brazil but not at the Canary Islands as 58% and 46% of the pollinators, respectively, had significantly fewer regional interaction partners. Finally, the pollinators deviation from randomness (i.e. the z-scores, with negative and positive values being suggestive of link conservatism and opportunism, respectively) correlated significantly and negatively with regional specialization in both Brazil (Pearson correlation, $r=-0.34$, $p < 0.001$) and the Canary Islands (Pearson correlation, $r=-0.30$, $p=0.009$), while the relationship where non-significant for plants in both Brazil (Pearson correlation, $r=-0.25$, $p=0.14$) and

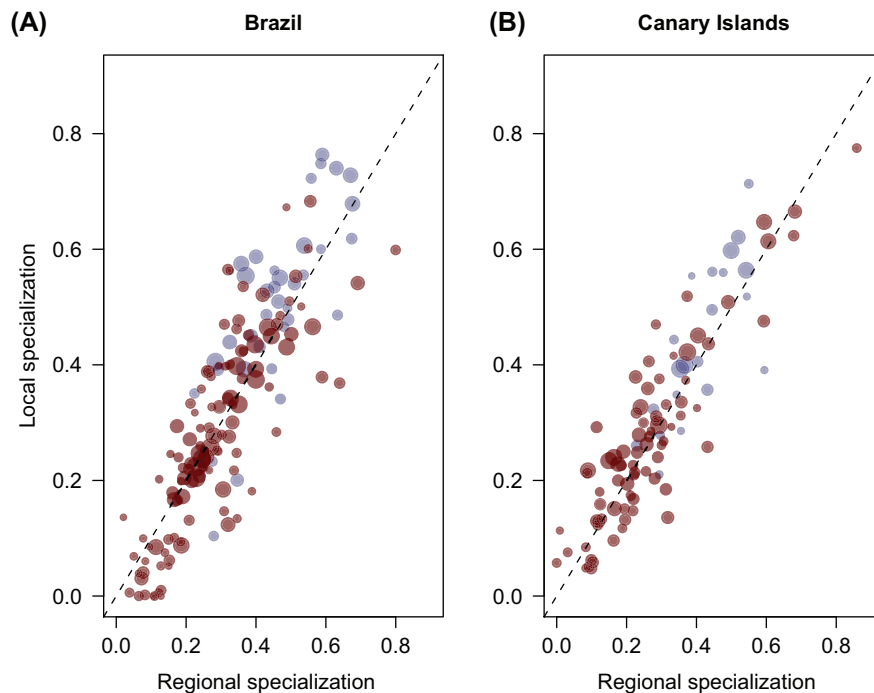


Figure 1. Mean local specialization ($d'_{s,local}$) and regional specialization ($d'_{s,meta}$) are strongly positively correlated in both Brazil and the Canary islands. Plants and pollinators are represented by blue and red points, respectively. The size of the data points indicate the number of co-occurring species (i.e. the number of potential interaction partners in the metaweb). Note that plants are generally more specialized than pollinators.

the Canary Islands (Pearson correlation, $r=0.16$, $p=0.50$) (Fig. 3).

Discussion

The results from the two regions were surprisingly similar. Local and regional specialization were strongly correlated in both regions. Plants were generally more specialized than pollinators (Fig. 1) despite a general trend of having more interaction partners (Fig. 2). A correlation between local and regional specialization was expected, however, a strong correlation close to 1:1 indicates that local and regional specialization, in terms of d'_s , is largely interchangeable, and that species in plant-pollinator networks are consistent in their specialization level across scales. By aggregating the specialization level across geographically separated sampling sites, the current procedure attempted to capture the differences in interactions that can be found between populations and individuals (Araujo et al. 2008, Tur et al. 2014). In the Canary Islands the geographical distance between sites varied from 52 to 456 km, while the distance in Brazil varied between 1.4 and 8.5 km. Yet, the rocky outcrops found in the campo rupestre, within which the surveys were done in Brazil, can to some extent be seen as isolated habitat patches within a matrix of grassland, and the actual isolation between the populations is likely larger than the geographical distances dictates. However, we

cannot preclude that increasing the geographical extent so that we covered even more distant populations, especially in Brazil, would lead to different results. Nevertheless, it seems encouraging that the relationship between local and regional specialization were almost identical when comparing the Brazilian and Canarian communities, which suggest that this pattern might actually be a general trend. More studies from different communities are needed, however, to explore the generality of this finding.

Larger distances and increased isolation between sites could result in local population-specific adaptations within species, and thus translate into a larger inter-island variability in interaction partners, which ultimately would result in higher opportunism at the regional scale (Thompson 2005, Trøjelsgaard et al. 2015). Indeed, this could potentially partly explain why a lower percentage of plants and animals showed link conservatism in the Canary Island compared with the networks in Brazil. In fact, it is important to note that the Brazilian and Canarian communities also differ in a number of other aspects. For example, across the sampling sites the ratio of pollinators:plants were on average 4.4 ± 1.0 (mean \pm SD) in the Canary Islands, and 2.6 ± 0.4 in Brazil. A lower diversity of plants in the Canarian communities may hamper the pollinators potential to show a strong fidelity across sites when compared with a null model. However, if partner diversity was the sole explanation, we would expect the Canarian plants to show a stronger fidelity as they have more partners to choose from and, therefore, a larger potential

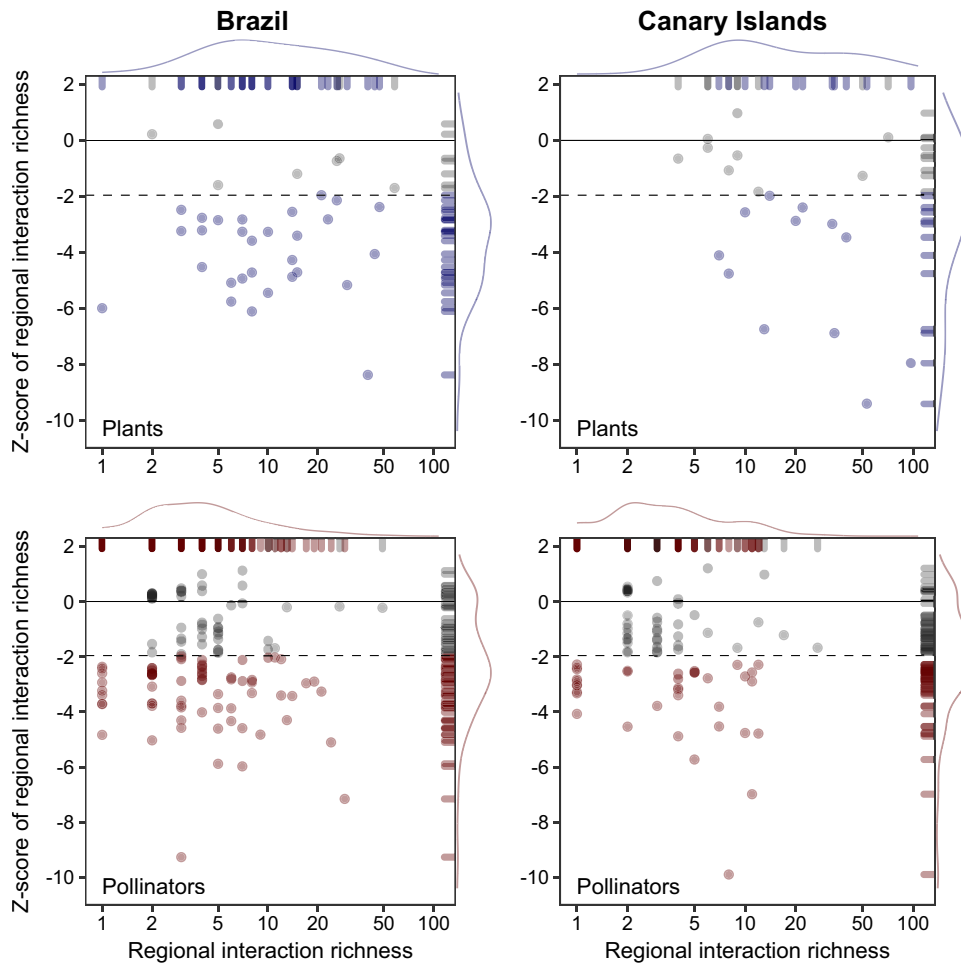


Figure 2. Null model analysis on expected regional interaction richness versus observed regional interaction richness (γ_s). A z-score below -1.96 means that the species has significantly fewer regional interaction partners than expected from random (link conservatism), and colored data points fall below this threshold. Density curves indicate the distribution of points across the spectra. Note that plants generally have more interaction partners (higher interaction richness) than pollinators. Plants and pollinators are represented by blue and red points, respectively.

to deviate from the null model. Nonetheless, as mentioned, both Canarian plants and pollinators had a lower percentage of link conservative species compared with the species found in Brazil. Thus, partner diversity (i.e. the pollinators:plants ratio) is likely not the sole explanation. Another important aspect could be species turnover (see also Carstensen et al 2014, Trøjelsgaard et al. 2015). That is, if there is a strong turnover in partners from site to site (or island to island) the potential for link conservatism diminishes. The plant communities were on average more similar across the Canary Islands (average Sorensen similarity across sites \pm SD, Canary Islands = 0.44 ± 0.13 ; Brazil = 0.33 ± 0.14), while the pollinator communities on average were more similar in Brazil (average Sorensen similarity across sites \pm SD, Canary Islands = 0.24 ± 0.12 ; Brazil = 0.43 ± 0.06). Thus, while the high turnover of pollinators in the Canary Island might explain why a lower percentage of the plants show significant link conservatism, this does not explain the patterns observed for the pollinators. Finally, the studied communities also

differ in e.g. species composition, climate conditions, and other biotic and abiotic aspects, which makes it difficult to isolate a single common mechanism as responsible for the difference in link conservatism between the Canarian and Brazilian communities.

Overall, for specialist species the foraging and interaction choices are most likely a consequence of trait complementarities, while generalists could be expected to forage or interact mainly according to relative abundances of potential partners. Link conservatism should therefore be higher for specialist species, as we have confirmed (Fig. 3). Indeed, as we argue below, link conservatism and d'_s should be evaluated together to reliably indicate true specialists.

Our results show that most species have significantly fewer regional interactions than expected based on our null model. Thus, at the local scale species are constrained in their fundamental niche, indicating innate restrictions in their interaction partners, likely because of trait complementarity (Santamaria and Rodríguez-Girones 2007, Olesen

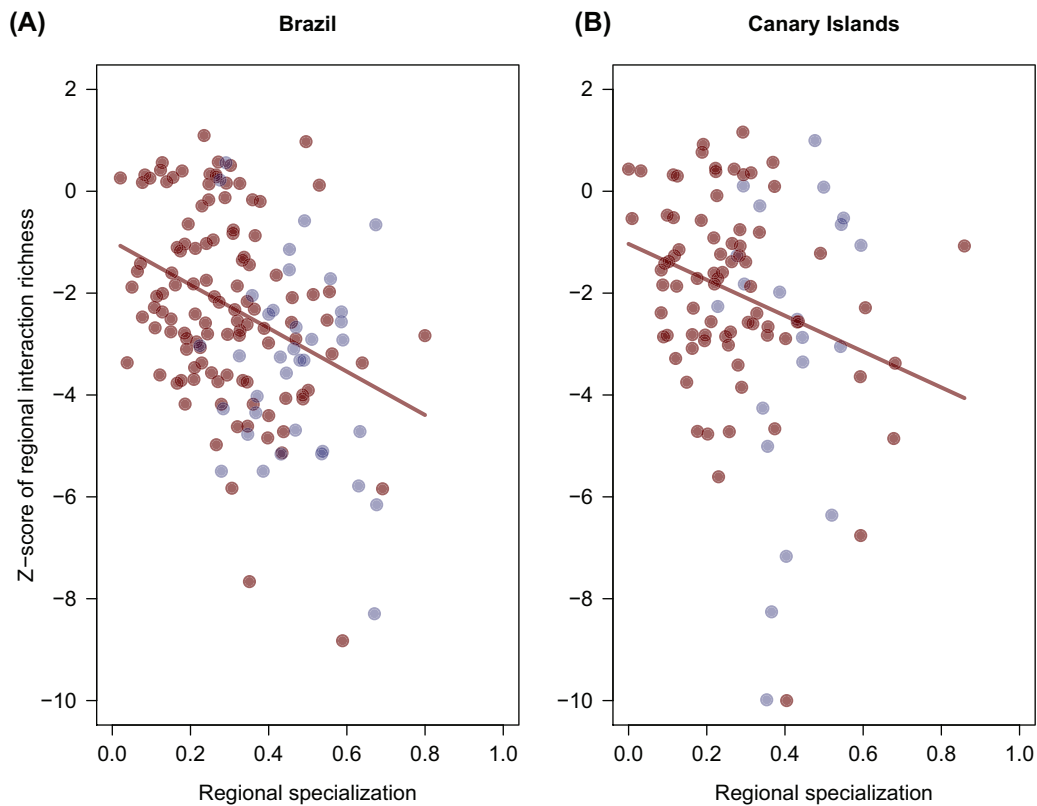


Figure 3. Z-scores and regional specialization ($d'_{s,meta}$) show significantly negative correlations for pollinators in both Brazil ($r=-0.34$, $p < 0.001$) and the Canary Islands ($r=-0.30$, $p=0.009$). These are highlighted with trend lines. For the plant species, however, the relationships were non-significant in both Brazil and the Canary Islands and trend lines have been omitted. Plants and pollinators are represented by blue and red points, respectively.

et al. 2011). Species with the largest negative z-values tend to interact repeatedly with the same species across sites, and they therefore show high link conservatism (see also Trøjelsgaard et al. 2015). This indicates stronger constraints on the fundamental niche. Even within the species that show significant link conservatism (z-score < -1.96) some species show much stronger constraints, indicating true specialists. Interestingly, the level of conservatism seems unrelated to regional interaction richness (γ) (Fig. 2). We argue that labeling a species as specialist is not necessarily dependent only upon it having few interaction partners, but that interactions are repeatedly formed with the same subset of species, and thus showing a strong signal of link conservatism. This might add another dimension to the discussion about species specialization versus generalization (Waser 2006, Ollerton et al. 2007, Schleuning et al. 2012, Rosas-Guerrero et al. 2014), as the categorization as specialist or generalist might be strongly dependent upon the spatial scale at which species are investigated. For pollinators there was a significant correlation between z-scores and the measurement of regional specialization ($d'_{s,meta}$) in both Brazil and the Canary Island, which further supports the designation of true specialists. It is here important to re-emphasize that our null model was framed around the neutral theory suggesting that biotic

interaction to a large extent is governed by species abundance (Canard et al. 2014, Poisot et al. 2015). By ignoring any phenological and morphological constraints we may overestimate the availability of potential partners, and some species may appear more conservative than if such constraints were also taken into account. Importantly, however, large deviation from randomness also occurred among species having many regional interaction partners, where there is little evidence of phenological and morphological constraints, as they interact with a large proportion of the available partners. Therefore, incorporating such constraints would probably have minimal impact for at least some of the species. Still, with good phenological resolution and detailed morphological trait data the impact of these constraints could be explored further. Also, our approach could be further applied to investigate the role of floral traits in defining visitation fidelity, revisiting the discussion on the generalization in pollination system towards the tropics (Ollerton et al. 2009, Schleuning et al. 2012, Rosas-Guerrero et al. 2014), with consequences for plant reproductive success and adaptation to environmental changes.

The interaction richness of a species is ultimately limited by the availability of potential partners at a given site, which, in turn, is determined by functional traits (Ibanez et al. 2016). However, according to our results, it would be sensible to

distinguish between niche breadth and specialization, because link conservatism (z-scores) and niche breadth (regional interaction richness) were not correlated (Fig. 2). In some cases, species with wider niches might repeatedly choose the same partners across populations while species with narrower niches exert a random pattern, indicating specialists and generalists, respectively. Thus, we argue that measures of local and regional specialization, together with a null model approach, can provide a robust evaluation of species specialization by including information on whether the identity of interaction partners change across local populations.

Acknowledgements – We thank the Cedro Company, ICMBio and Reserva Vellozia for permission to work in their protected areas.

Funding – This work was funded by São Paulo Research Foundation (FAPESP) grant no. 2011/22635-2 and no. 2014/01594-4 to DWC, no. 2010/51307-0 to LPCM and Visiting Research grant no. 2013/14442-5 to JO, the Danish Council for Independent Research | FNU no. 109751 to DWC and CNPq research productivity grant to LPCM.

Author contributions – The first and second author contributed equally to this paper.

References

- Armbruster, W. S. 2017. The specialization continuum in pollination systems: diversity of concepts and implications for ecology, evolution and conservation. – *Funct. Ecol.* 31: 88–100.
- Araujo, M. S. et al. 2008. Network analysis reveals contrasting effects of intraspecific competition on individual versus population diets. – *Ecology* 89: 1981–1993.
- Blüthgen, N. et al. 2006. Measuring specialization in species interaction networks. – *BMC Ecology* 6: 1–12.
- Bolnick, D. I. et al. 2002. Measuring individual-level resource specialization. – *Ecology* 83: 2936–2941.
- Burkle, L. A. et al. 2016. The beta-diversity of species interactions: untangling the drivers of geographic variation in plant–pollinator diversity and function across scales. – *Am. J. Bot.* 103: 118–128.
- Canard, E. F. et al. 2014. Empirical evaluation of neutral interactions in host–parasite networks. – *Am. Nat.* 183: 468–479.
- Carstensen, D. W. et al. 2014. Beta diversity of plant–pollinator networks and the spatial turnover of pairwise interactions. – *PLoS One* 9(11): e112903.
- Carstensen, D. W. et al. 2016. Modularity, pollination systems and interaction turnover in plant–pollinator networks across space. – *Ecology* 97: 1298–1306.
- Carstensen, D. W. et al. 2017. Data from: Local and regional specialization in plant–pollinator networks. – Dryad Digital Repository, <<http://dx.doi.org/10.5061/dryad.c45cd>>.
- Devictor, V. et al. 2010. Defining and measuring ecological specialization. – *J. Appl. Ecol.* 47: 15–25.
- Dormann, C. F. 2011. How to be a specialist? Quantifying specialisation in pollination networks. – *Network Biol.* 1: 1–20.
- Dunne, J. A. 2006. The network structure of food webs. – In: Pascual, M. and Dunne, J. A. (eds), *Ecological networks: linking structure to dynamics in food webs*. Oxford Univ. Press, pp. 27–86.
- Dupont, Y. L. et al. 2011. Scaling down from species to individuals: a flower-visitation network between individual honeybees and thistle plants. – *Oikos* 120: 170–177.
- Fox, L. R. and Morrow, P. A. 1981. Specialization: species property or local phenomenon. – *Science* 211: 887–893.
- Ibanez, S. et al. 2016. How phylogeny shapes the taxonomic and functional structure of plant–insect networks. – *Oecologia* 180: 989–1000.
- Junker, R. R. et al. 2013. Specialization on traits as basis for the niche-breadth of flower visitors and as structuring mechanism of ecological networks. – *Funct. Ecol.* 27: 329–341.
- King, C. et al. 2013. Why flower visitation is a poor proxy for pollination: measuring single-visit pollen deposition, with implications for pollination networks and conservation. – *Methods Ecol. Evol.* 4: 811–818.
- Morales-Castilla, I. et al. 2015. Inferring biotic interactions from proxies. – *Trends Ecol. Evol.* 30: 347–356.
- Olesen, J. M. et al. 2011. Missing and forbidden links in mutualistic networks. – *Proc. R. Soc. B* 278: 725–732.
- Ollerton, J. and Cranmer, L. 2002. Latitudinal trends in plant–pollinator interactions: are tropical plants more specialised? – *Oikos* 98: 340–350.
- Ollerton, J. et al. 2007. Multiple meanings and modes: on the many ways to be a generalist flower. – *Taxon* 56: 717–728.
- Ollerton, J. et al. 2009. Fly pollination in *Ceropegia* (Apocynaceae: Asclepiadoideae): biogeographic and phylogenetic perspectives. – *Ann. Bot.* 103: 1501–1514.
- Ollerton, J. et al. 2011. How many flowering plants are pollinated by animals? – *Oikos* 120: 321–326.
- Ollerton, J. et al. 2015. Using the literature to test pollination syndromes – some methodological cautions. – *J. Pollination Ecol.* 16: 119–125.
- Poisot, T. et al. 2015. Beyond species: why ecological interaction networks vary through space and time. – *Oikos* 124: 243–251.
- Rosas-Guerrero, V. et al. 2014. A quantitative review of pollination syndromes: do floral traits predict effective pollinators? – *Ecol. Lett.* 17: 388–400.
- Santamaria, L. and Rodríguez-Girones, M. A. 2007. Linkage rules for plant–pollinator networks: trait complementarity or exploitation barriers? – *Plos Biol.* 5(2): e31.
- Schleuning, M. et al. 2012. Specialization of mutualistic interaction networks decreases toward tropical latitudes. – *Curr. Biol.* 22: 1925–1931.
- Silveira, F. A. O. et al. 2016. Ecology and evolution of plant diversity in the endangered campo rupestre: a neglected conservation priority. – *Plant Soil* 403: 129–152.
- Thompson, J. N. 2005. *The geographic mosaic of coevolution*. – Univ. of Chicago Press.
- Trøjelsgaard, K. et al. 2013. Island biogeography of mutualistic interaction networks. – *J. Biogeogr.* 40: 2020–2031.
- Trøjelsgaard, K. et al. 2015. Geographical variation in mutualistic networks: similarity, turnover and partner fidelity. – *Proc. R. Soc. B* 282: 20142925.
- Tur, C. et al. 2014. Downscaling pollen–transport networks to the level of individuals. – *J. Anim. Ecol.* 83: 306–317.
- Waser, N. M. 2006. Specialization and generalization in plant–pollinator interactions: a historical perspective. – In: Waser, N. M. and Ollerton, J. (eds), *Plant–pollinator interactions: from specialization to generalization*. Univ. of Chicago Press, pp. 3–17.
- Waser, N. M. et al. 1996. Generalization in pollination systems, and why it matters. – *Ecology* 77: 1043–1060.