

# Deforestation and CO<sub>2</sub> emissions in coastal Tanzania from 1990 to 2007

FABIANO L. GODOY<sup>1</sup>, KARYN TABOR<sup>1</sup>, NEIL D. BURGESS<sup>2</sup>,  
BONIFACE P. MBILINYI<sup>3</sup>, JAPHET J. KASHAIGILI<sup>4</sup> AND MARC K. STEININGER<sup>1</sup>

<sup>1</sup>Science and Knowledge, Conservation International, 2011 Crystal Drive, Suite 500 Arlington, VA 22202, USA, <sup>2</sup>Center for Macroecology, Evolution and Climate, Department of Biology, University of Copenhagen, Universitetsparken 15, DK-2100, Copenhagen, Denmark and WWF-US, Conservation Science Program, 1250 24<sup>th</sup> St NW, Washington, DC 20037-1193, USA, <sup>3</sup>Department of Agricultural Engineering and Land Planning, Sokoine University of Agriculture, PO Box 3003, Morogoro, Tanzania, and <sup>4</sup>Department of Forest Mensuration and Management, Sokoine University of Agriculture, PO Box 3013, Morogoro, Tanzania

Date submitted: 31 August 2010; Date accepted: 11 March 2011; First published online: 1 August 2011

## SUMMARY

Conversion of forest to other land uses is a major contributor to climate change. The coastal forests of Tanzania have increasingly been recognized as being of global biodiversity importance, due to high rates of species endemism. Rates of forest loss are similar to those of other tropical regions, resulting in increasing levels of threat for the biological values within the remaining forest and potentially significant source of CO<sub>2</sub> emissions. This study estimated the remaining cover and carbon stock of Tanzania's coastal forests and the CO<sub>2</sub> emissions due to forest loss between *c.* 1990 and *c.* 2007. Coastal Tanzania contained over 273 700 ha of forest in 2007. Deforestation rates in the area have slowed from 1.0 % yr<sup>-1</sup>, or > 3735 ha yr<sup>-1</sup> during the 1990s, to 0.4 % yr<sup>-1</sup>, or > 1233 ha yr<sup>-1</sup> during 2000–2007. Despite lower deforestation rates in 2000–2007, the percentage forest lost from within reserved areas has remained steady at 0.2 % yr<sup>-1</sup> for both time periods. CO<sub>2</sub> emissions from deforestation slowed from at least 0.63 Mt CO<sub>2</sub> yr<sup>-1</sup> in 1990–2000 to at least 0.20 Mt CO<sub>2</sub> yr<sup>-1</sup> in 2000–2007. Regional forest clearance in Tanzania is highly dynamic; while rates have slowed since 2000, forest habitat conversion has continued and there is no guarantee that future rates will remain low. A rigorous policy on reducing emissions from deforestation and degradation (REDD) should be implemented to avoid future increases in deforestation rates.

*Keywords:* biomass, carbon stock, climate change, eastern Africa, forest cover, forest reserves, greenhouse gases, lowland forests, protected areas, remote sensing

## INTRODUCTION

The scientific community has recognized that conversion of forest to other land uses is a major contributor to climate change (Foley *et al.* 2005; IPCC [Intergovernmental

Panel on Climate Change] 2007). Deforestation in the tropics contributes 12–17 % of annual global CO<sub>2</sub> emissions (Houghton 2007; IPCC 2007; Van der Werf *et al.* 2009). The amount of CO<sub>2</sub> released from forest conversion depends on the conversion rate and methods, and on carbon stocks in the vegetation and soil. Tropical dry forest generally has lower carbon densities than humid forest, but dry forest covers *c.* 40 % of all tropical vegetation (Murphy & Lugo 1995; Jaramillo *et al.* 2003; Glenday 2008) and therefore represents a significant terrestrial carbon store.

The coastal forests of east Africa are a mosaic of tropical dry forest habitats, with wetter forest types at higher elevations and along rivers. Only 5% of the tropical dry forest habitat remains in the eastern African coastal region, and is mostly found in patches of > 500 ha (Burgess *et al.* 1998, 2000).

## Biological value

During the past 20 years, the coastal forest region has increasingly been recognized as a region of major conservation importance within the African continent (Olson & Dinerstein 1998; Stattersfield *et al.* 1998; Burgess *et al.* 2004). The vegetation contains over 4000 plant species within more than 1000 plant genera, of which around 1750 plant species and 27 genera are endemic (Burgess *et al.* 2004). Lowland forest contains at least 554 forest-dependent endemic plant species, with 17 endemic genera (Clarke 2000). A substantial proportion of the endemic plant species are confined to a single forest, for example the Rondo and Litipo forests in southern Tanzania with at least 60 and 30 endemics, respectively (Clarke 2000). The coastal forest patches are also important in terms of vertebrate diversity and endemism, with 14 endemic species of birds, 14 endemic mammals, 132 endemic or near-endemic reptiles and seven endemic amphibians (Burgess *et al.* 2004).

## Threats to remaining habitat

The remaining fragments of coastal forest of Tanzania are found within a matrix of miombo woodland, plantation and agricultural habitats (Burgess & Muir 1994; Burgess *et al.* 2000; CEPF [Critical Ecosystems Partnership Fund] 2003). They are threatened by clearing for farmland, selective logging

\*Correspondence: Fabiano Godoy e-mail: fgodoy@conservation.org

for timber and burning for charcoal (Burgess *et al.* 2000). Charcoal is the major cooking fuel for urban Tanzanians, especially in Dar es Salaam (Anderson & Holm 1990; Ongara 1991; Burgess *et al.* 2004; Ahrends *et al.* 2010). Within the Dar es Salaam and Pwani regions, forest disturbance and degradation are highly related to distance to Dar es Salaam city (Ahrends *et al.* 2010).

### Reserved areas

The study area contains 108 reserved areas, mainly forest reserves (FR), ranging in size from <100 ha to *c.* 200 000 ha, covering a total area of 872 000 ha (UNEP-WCMC [United Nations Environment Programme-World Conservation Monitoring Centre] & IUCN [International Union for Conservation of Nature] 2009). However, only 14 have been assigned an IUCN protected area category (for example the Mlinga Forest Reserve is IUCN category Ib and the Pande Game Reserve is IUCN category IV). A few are managed for catchment protection or forest conservation by the national Forestry and Beekeeping Division (FBD), but most are managed mainly by the District Natural Resource Departments for the production of timber and other forest products. Some are plantations of *Eucalyptus*, *Senna siam* or teak (*Tectona grandis*). Within all reserves, there is an intention to maintain forest cover and condition, but economic policies are not fully integrated with biodiversity management goals (Dallu 2004) and budgets for enforcement and patrolling are insufficient for most reserves (Burgess *et al.* 2010).

### Carbon stock

Determining the average biomass for different parts of the study area is complicated because much of the forest is partially degraded and few field studies of forest biomass in the region have been published. Tanzania has reported an average forest biomass value of 60 tC ha<sup>-1</sup> to the Food and Agriculture Organization (FAO 2010), although this is a national average that includes higher-biomass forest west of our study area. The national FBD reported an average biomass value of 157 tC ha<sup>-1</sup> for eastern lowland forest with low to medium levels of degradation, and 33 tC ha<sup>-1</sup> for highly-degraded lowland forest (FBD 2007). Another study of degraded forest around Dar es Salaam reported a biomass range from 52 tC ha<sup>-1</sup> in areas 200 km from the city, to as low as 4 tC ha<sup>-1</sup> for the most heavily-degraded forest on the city margins (Ahrends *et al.* 2010). Finally, an African-wide satellite-based analysis of biomass produced average estimates of 64 tC ha<sup>-1</sup> over all forest in our study area, with an average per district ranging from 75 tC ha<sup>-1</sup> in Lindi to 5 tC ha<sup>-1</sup> in Dar es Salaam (Baccini *et al.* 2008).

Understanding the trends of deforestation within the fragmented patches of forest remaining in Tanzania's coastal region and their contribution to CO<sub>2</sub> emissions is crucial for the design of climate change mitigation and adaptation strategies that also aim to preserve the threatened biodiversity

within these forests. Moreover, the fragmented forests have high biological importance and support hundreds of species found nowhere else on Earth (Burgess & Muir 1994; Burgess *et al.* 1998, 2000; Brooks *et al.* 2002). They are also used by local people to support their livelihoods (Burgess & Clarke 2000). Thus these forests are not only biotic carbon stocks, but also provide important biological and economical co-benefits. They also have a valuable role in conserving biodiversity and providing multiple benefits from the natural ecosystems.

This study builds on a previous study of deforestation rates and patterns during the 1990s (Tabor *et al.* 2010). Here we aim to (1) estimate the carbon emissions due to the deforestation of coastal forests in Tanzania between 1990 and 2007, and (2) assess the deforestation rate (and the loss of carbon) within reserves versus non-reserved areas in the same area.

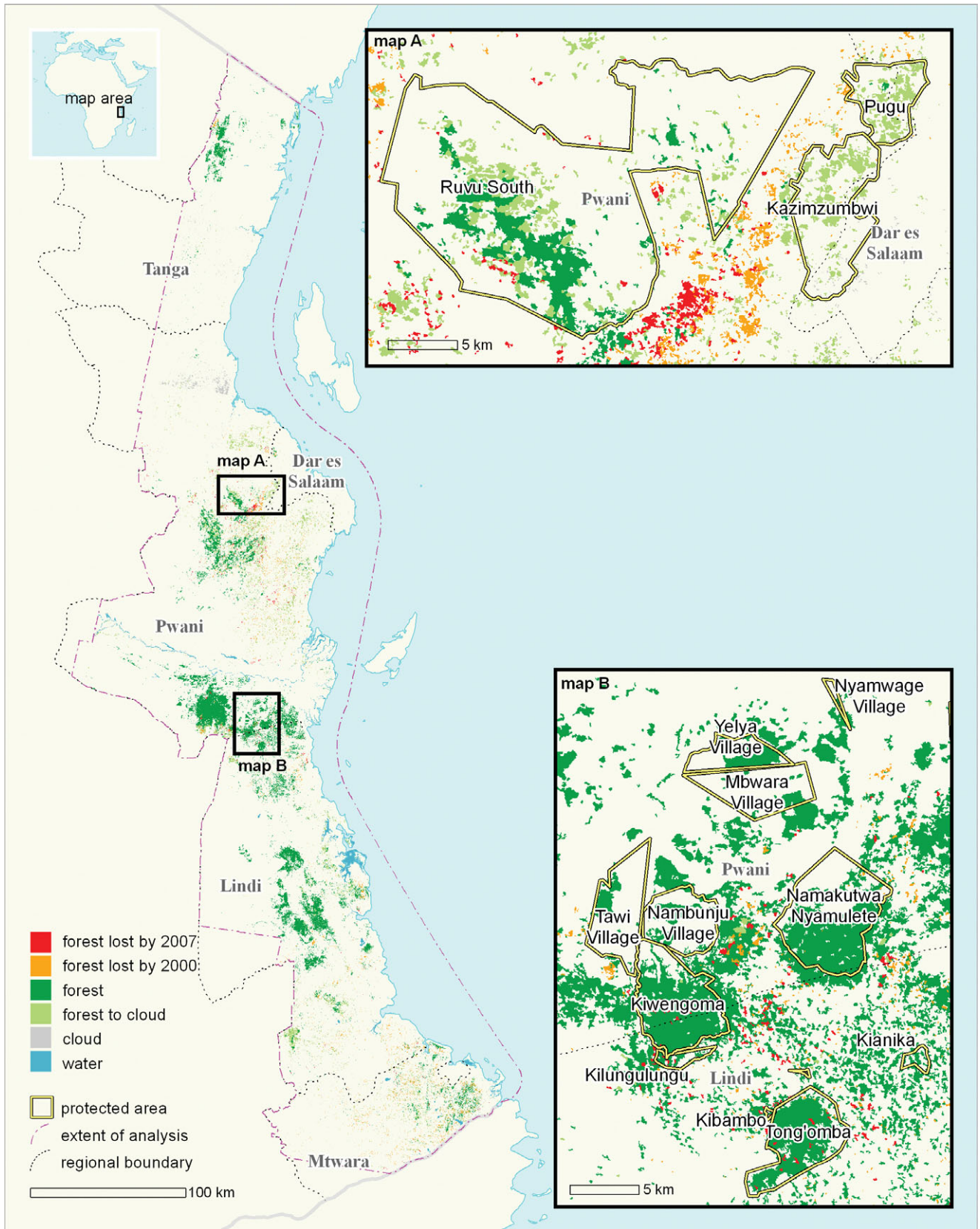
## METHODS

### Study area characterization

The coastal forest mosaic of eastern Africa comprises several forest types, including dry forest, scrub forest, riverine forest and coastal/afromontane transition forest (Clarke 2000; Schipper & Burgess 2003). For the purposes of this paper, we refer to this region as the Zanzibar-Inhambane Coastal forest mosaic ecoregion (Olson *et al.* 2001). In Tanzania, this region extends from the northern to southern border of the country and approximately 100 km inland from the coast. It covers, or partially covers, 18 districts within five political regions: Tanga, Pwani, Lindi, Mtwara and Dar es Salaam (Fig. 1). The area's annual rainfall is 500–1400 mm yr<sup>-1</sup>, its elevation is 0–1000 m above sea level, and its forests are mostly closed-canopy formations (Hamilton & Bensted-Smith 1989). Canopy height of these forests is typically 10–30 m, with the exception of trees in the transition forests at the base of the Eastern Arc mountains reaching 50 m (Burgess & Muir 1994). The focus of the analysis was on coastal dry forest and scrub forest types, which are closed canopy vegetation. Only those forests defined by remote sensing as closed-canopy tree cover in patches > 2 ha in size were considered. Deciduous woodlands were not included because of lower accuracy in distinguishing those areas from farmed landscapes with planted trees using medium-resolution satellite imagery.

### Image processing

Following the methodology described in Harper *et al.* (2007) and Tabor *et al.* (2010), we updated a Landsat-based map of forest cover and loss from 1990 to 2000 for the coastal region of eastern Africa using new Landsat data from *c.* 2007. We used orthorectified Landsat-5 and Landsat-7 images for the *c.* 1990 and *c.* 2000 periods and gap-filled Landsat-7 ETM+ SLC-off imagery acquired for *c.* 2007. The *c.* 2007 images were co-registered to the orthorectified *c.* 2000 Landsat data from NASA's Geocover project (Tucker *et al.* 2004). Two-date image pairs for *c.* 2000 and *c.* 2007 were classified



**Figure 1** The extent of the coastal forests of Tanzania, across Tanga, Pwani, Lindi, Mtwara and Dar es Salaam regions, and forest cover in 1990–2000–2007. The two map insets detail patterns of deforestation from 1990–2000–2007 around reserved areas near Dar es Salaam (map A) and northern Lindi (map B).

using a supervised maximum likelihood classifier (MLC). Training classes for the MLC were visually interpreted from the imagery with the assistance of aerial photography, field data of the land use, and local expertise. We also referenced Tabor *et al.*'s (2010) validated forest cover classification for *c.* 2000 during the classification process to minimize differences in interpretation. The forest class was defined as primary, mature forest with closed canopy of >5 m height. Non-forest areas included farmland, fallows, open wooded areas, grasslands and plantations. The classification methodology, as explained in detail by Tabor *et al.* (2010), involved delineating multiple sites to define subclasses of each final class desired and running multiple iterations of the MLC. We then evaluated each iteration's results and added or modified training sites based on assessment of conspicuous errors until a final version was obtained that we believed to be as accurate as the source satellite data allowed. We combined the subclasses of the final classification with the final classes desired and filtered the result using a two-hectare sieve filter. We used the same approach and same type of source data, and interpreted in the same way with the experience from the previous forest cover and change analysis for *c.* 1990–*c.* 2000. Thus, while we did not have new aerial or field data to validate the 2007 map, we assumed a similar level of accuracy to that estimated from the previous time period; this is an overall land-cover of 88 % (Tabor *et al.* 2010).

### Forest cover and change statistics

Forest cover for 1990, 2000 and 2007 and change rates were calculated for each political region in Tanzania (ILRI [International Livestock Research Institute] 2007) and for each reserved area using the 2010 release of the World Database of Protected Areas (UNEP-WCMC & IUCN 2009). Dar es Salaam region was fully covered, while Tanga, Pwani, Lindi and Mtwara regions were only partially covered and thus we only report results for the analysed regions. All reserved areas that we analysed were fully covered by the satellite-image analysis.

We defined 'observed forest cover' as areas mapped as forest with the satellite image for the date in question, with a minimum-mapping unit of two hectares. 'Known forest cover' were areas of observed forest plus areas covered by cloud, but mapped as observed forest for a later image date. We included these areas as known forest because we excluded young secondary forest in our forest class. Rates of forest loss were calculated in per cent per year, based only on areas that were cloud free during either of the two dates in question. These rates were calculated using the accumulation function used by the Food and Agriculture Organization of the United Nations (FAO 1995).

The cloud factor (CF) value for each estimate was the ratio of observed habitat to that plus the potential habitat covered with clouds on that date. Similarly, the CF value for a change estimate was the baseline forest area divided by that plus forest covered by cloud in the second date. The CF value indicated

confidence in the calculated forest cover and change estimates based on the coverage of the satellite imagery used.

### Carbon stock and emission estimates

We used the Baccini *et al.* (2008) raster map of above-ground biomass to estimate the carbon stock and emission associated with forest clearing in the study area. Carbon content was assumed to be 50 % of dry weight. Below-ground carbon density was estimated by applying the root allocation equation from Cairns *et al.* (1997). We calculated the average carbon stock in above- and below-ground biomass for each district based on the forested area in 2000. We combined the map of carbon stocks with that of forest-loss data for 1990–2000 and 2000–2007 to estimate gross carbon emissions during each period. We assumed that all carbon content was released to the atmosphere immediately after deforestation, following the 'committed emissions' approach used by Houghton *et al.* (2000) and others. We did not include estimates of biomass stock of the replacement vegetation following deforestation. Thus, we estimated only the gross emissions of deforestation and not the net carbon exchange associated with the change in land cover.

## RESULTS

### Forest cover and change statistics

In 2007, coastal forest cover in Tanzania covered an area of 273 700 ha. Pwani and Lindi regions together had 236 633 ha or 86 % of the remaining coastal forest, while only 385 ha of forest remained in Dar es Salaam.

Across the study area, the rate of forest loss had slowed from the 1.0 % yr<sup>-1</sup> in the 1990s to 0.4 % yr<sup>-1</sup> in 2000–2007. Deforestation also slowed in each of the five regions. More specifically, the decrease was greatest in Dar es Salaam, followed by Mtwara region. Rates of forest loss slowed the least in Pwani region (Table 1).

The aggregate deforestation rate inside reserves was lower than that outside reserves. Rates inside reserves were 0.2 % yr<sup>-1</sup> in 1990–2000 and in 2000–2007 versus 1.3 % yr<sup>-1</sup> in the 1990s and 0.6 % yr<sup>-1</sup> in 2000–2007 outside reserves (Table 2). While in 2000–2007 forest loss rates decreased in unreserved areas, forest loss rates in reserved areas remained almost constant between 1990–2000 and 2000–2007. However, deforestation had occurred in some reserved areas at rates above the regional rate (Tables 3 and 4). Reserves in Dar es Salaam, Mtwara and Pwani regions were most impacted.

Ninety-eight per cent of the deforestation within reserved sites between 2000 and 2007 was accounted for by 22 of the 108 reserves assessed, and 76 % of deforestation was accounted for by only eight reserves, namely Forest Reserve (Mangrove) No. 27, Mnazi Bay-Ruvuma Estuary Marine Park, Ruvu North Fuel FR, Kiwengoma FR, Masanganya FR, Ngarambe-Tapika FR, Ruvu South FR and Tong'omba FR (Table 5). Several reserves showed increases in deforestation

**Table 1** Forest loss and emissions among districts in Tanzania during the periods 1990–2000 and 2000–2007.

Region	Forest cover (ha)			Annual forest change 1990–2000		Annual forest change 2000–2007		Cloud factor (%)		Annual emission rate tCO <sub>2</sub> yr <sup>-1</sup>	
	c.1990	c. 2000	c. 2007	ha yr <sup>-1</sup>	% yr <sup>-1</sup>	ha yr <sup>-1</sup>	% yr <sup>-1</sup>	1990–2000	2000–2007	1990–2000	2000–2007
	Dar es Salaam	2007	650	385	66	-7.9	1	-0.2	3	14	553
Lindi	152 026	141 977	114 789	1106	-0.8	181	-0.2	100	81	267 524	56 576
Mtwara	43 576	29 601	16 942	1553	-4.2	103	-0.6	100	59	198 132	16 042
Pwani	201 133	165 714	121 844	1537	-0.9	908	-0.7	54	58	151 151	125 521
Tanga	22 023	20 390	19 749	57	-0.3	0	0.0	60	55	14 574	0
Total	420 765	358 333	273 709	3735	-0.98	1233	-0.44	67	65	631 933	198 154

**Table 2** Forest loss and emissions both inside and outside reserves (mainly FRs) in Tanzania during the periods 1990–2000 and 2000–2007.

Forest factors	1990–2000			2000–2007		
	Inside reserve	Outside reserve	Total	Inside reserve	Outside reserve	Total
Initial forest cover (ha)	105 189	289 962	395 150	89 942	197 400	282 342
Forest cover at end of period (ha)	107 916	288 807	358 333	110 434	313 293	423 728
Annual forest cover change over period (ha yr <sup>-1</sup> )	157	3577	3734	123	1109	1233
Annual forest cover change over period (% yr <sup>-1</sup> )	-0.2	-1.3	-1.0	-0.2	-0.6	-0.4
Cloud factor (%)	84	63	67	74	63	65
Proportion of total forest loss during period (%)	4	96	100	11	89	100

**Table 3** Forest loss and emissions both inside and outside reserves (mainly FRs) among districts in Tanzania during the periods 1990–2000.

Forest factors	Dar es Salaam		Lindi		Mtwara		Pwani		Tanga	
	Inside reserve	Outside reserve	Inside reserve	Outside reserve	Inside reserve	Outside reserve	Inside reserve	Outside reserve	Inside reserve	Outside reserve
Initial forest cover (ha)	589	382	47 698	104 222	1135	42 441	45 265	132 259	10 501	10 657
Annual forest cover change (ha yr <sup>-1</sup> )	31	35	37	959	31	1522	81	1456	8	42
Annual forest cover change (% yr <sup>-1</sup> )	-6.0	-11.4	-0.1	-1.0	-3.1	-4.2	-0.2	-1.1	-0.1	-0.4
Cloud factor (%)	30	1	100	100	100	100	72	50	85	47
Proportion of total forest loss (%)	47	53	3	96	2	98	5	95	14	85

**Table 4** Forest loss and emissions both inside and outside reserves (mainly FRs) among districts in Tanzania during the periods 2000–2007.

Forest factors	Dar es Salaam		Lindi		Mtwara		Pwani		Tanga	
	Inside reserve	Outside reserve	Inside reserve	Outside reserve	Inside reserve	Outside reserve	Inside reserve	Outside reserve	Inside reserve	Outside reserve
Initial forest cover (ha)	340	51	39 322	76 913	669	17 098	34 546	93 655	10 066	9683
Annual forest cover change (ha yr <sup>-1</sup> )	0	1	33	118	10	83	74	730	0	0
Annual forest cover change (% yr <sup>-1</sup> )	0.0	-1.7	-0.1	-0.2	-1.5	-0.5	-0.2	-0.8	0.0	0.0
Cloud factor (%)	34	3	83	81	78	59	70	55	81	41
Proportion of total forest loss (%)	19	81	19	81	9	91	8	92	0	0

**Table 5** Forest loss and emissions from the top 22 (out of 108) reserves in Tanzania 1990–2000 and 2000–2007. Key reserved areas description: FR = forest reserve (managed by central government and local authority); Village FR = village land forest reserve; NP = national park; GR = game reserve; and MP = marine park.

Reserves	IUCN category	Forest cover (ha)			Annual forest change 1990–2000		Annual forest change 2000–2007		Cloud factor (%)		Annual emission rate tCO <sub>2</sub> yr <sup>-1</sup>	
		c.1990	c. 2000	c. 2007	ha yr <sup>-1</sup>	% yr <sup>-1</sup>	% yr <sup>-1</sup>	ha yr <sup>-1</sup>	1990–2000	2000–2007	1990–2000	2000–2007
Mlinga FR	Ib	272	260	259	0	0.0	0	0.0	96	95	6	0
Segoma FR	IV	1041	984	969	0	0.0	0	0.0	94	92	0	0
Kazimzumbwi FR	unknown	1019	156	8	-3	-1.5	0	-2.0	10	1	138	0
Pande GR	IV	574	400	335	-30	-6.2	0	0.0	89	78	244	0
Rondo FR	unknown	5903	5877	1082	-3	0.0	-2	-0.2	100	19	677	548
Forest Res. (Mang.) No.27	unknown	1702	1287	717	-17	-1.3	-20	-2.6	55	45	2325	4784
Forest Res. (Mang.) No.37	unknown	62	17	1	-5	-13.2	0	0.0	100	4	676	0
Mbinga FR	unknown	672	574	82	-3	-0.5	-3	-3.6	90	17	852	1110
Mgambo FR	VI	699	686	686	-1	-0.1	0	0.0	100	100	247	0
Mnazi Bay-Ruv. Est. MP	unknown	680	452	329	-25	-4.4	-10	-2.6	100	90	3439	1657
Mohoro FR	unknown	923	923	896	0	0.0	-3	-0.3	100	100	0	872
Mohoro River FR	unknown	14	14	13	0	0.0	0	-0.7	100	100	0	28
Ngarama FR	unknown	17 536	17 484	16 323	-6	0.0	-2	0.0	100	93	1449	531
Nyumburuni FR	unknown	87	57	0	-1	-1.7	-1	-100.0	64	4	137	233
Ruvu North Fuel FR	unknown	5133	4706	3	-37	-0.8	-21	-47.7	84	2	440	313
Bombo East 1 FR	VI	296	200	200	-6	-2.3	0	0.0	93	100	1801	0
Kingoma FR	unknown	236	228	0	-2	-0.7	-1	-100.0	98	3	223	254
Ruawa Munimbuo FR	unknown	260	190	97	-8	-3.4	0	0.0	100	49	1836	0
Bamba Ridge FR	IV	848	835	773	0	0.0	0	0.0	98	91	0	0
Kambai FR	VI	679	675	670	0	0.0	0	0.0	100	99	23	0
Kibambo FR	unknown	19	19	16	0	0.0	0	-1.8	100	100	0	107
Kichi Hills FR	unknown	6492	6492	6469	0	0.0	-1	0.0	100	100	0	156
Kilungulungu FR	unknown	188	185	166	0	-0.1	-2	-1.4	100	100	59	770
Kisangi Village FR	unknown	1467	1432	1428	-3	-0.2	0	0.0	100	100	992	0
Kiwengoma FR	unknown	2788	2787	2718	0	0.0	-7	-0.3	100	100	21	2247
Marenda FR	unknown	23	23	0	0	0.0	-1	-100.0	96	19	0	29
Masanganya FR	unknown	957	243	107	-1	-0.4	-12	-8.1	25	13	24	463
Mitundumbea FR	unknown	1883	1859	1464	-4	-0.2	0	0.0	100	79	741	0
Mlungui FR	VI	153	153	153	0	0.0	0	0.0	100	100	0	0
Ngarambe-Tapika FR	unknown	14 664	14 347	12 593	-29	-0.2	-13	-0.1	100	88	8346	3988
Nndawa Village FR	unknown	49	49	16	0	0.0	0	-2.0	100	40	0	110
Ntama FR	unknown	19	19	9	0	0.0	-1	-8.5	100	100	0	355
Ruvu South FR	unknown	6394	6204	3794	-8	-0.1	-20	-0.5	95	61	426	1849
Saadani NP	unknown	77	7	3	0	0.0	0	0.0	0	0	0	0
Tong'omba FR	unknown	2147	2127	2072	-2	-0.1	-7	-0.3	100	100	557	2151
Pugu FR	VI	807	243	24	-3	-1.4	0	0.0	29	3	189	0
Total		109 825	104 584	84 773	-145	-0.1	-144	-0.2	81	76	28 406	22 554

rates, namely Forest Reserve (Mangrove) No. 27, Mohoro FR, Kiwengoma FR, Masanganya FR, Ruvu South FR and Tong'omba FR.

### Carbon stock and emission estimates

The average carbon density of remaining coastal forest in Tanzania, as estimated by this study and Baccini *et al.* (2008), was  $64 \text{ tC ha}^{-1}$ . This provides an estimated 17 Mt C stored in the remaining coastal forest in 2007. We estimate carbon dioxide gross emissions from forest clear-cutting in the study area to have been  $0.63 \text{ Mt CO}_2 \text{ yr}^{-1}$  during the 1990s and  $0.20 \text{ Mt CO}_2 \text{ yr}^{-1}$  during 2000–2007. Like deforestation, emissions were reduced substantially from the 1990s to 2000–2007 for all the regions included in this study (Table 1). Pwani, with the highest deforestation rate in 2000–2007, had  $0.13 \text{ Mt CO}_2 \text{ yr}^{-1}$  or 63 % of the total emissions for that period.

During 2000–2007, emissions from reserved areas, mainly FRs, accounted for approximately 11 % of the total  $\text{CO}_2$  released from deforestation in the coastal forest of Tanzania. Total emissions from reserves decreased from  $0.03 \text{ Mt CO}_2 \text{ yr}^{-1}$  to  $0.02 \text{ Mt CO}_2 \text{ yr}^{-1}$ .

## DISCUSSION

We used new estimates of forest clearance in the Zanzibar Inhambane region of eastern Africa, combined with existing satellite-derived estimates of carbon stocks, to estimate the amount of carbon remaining in forest vegetation and  $\text{CO}_2$  emissions. These data were also used to estimate carbon losses in different parts of coastal Tanzania.

The average deforestation rate in the coastal forests of Tanzania during the 1990s was relatively high ( $1.0 \text{ \% yr}^{-1}$ ). This compares unfavourably with the average rate for the African continent ( $0.2 \text{ \% yr}^{-1}$ ; Hansen *et al.* 2008), and several African countries analysed using similar methods (ranging from a loss of  $0.2 \text{ \% yr}^{-1}$  in Liberia to  $0.9 \text{ \% yr}^{-1}$  in Madagascar; Christie *et al.* 2007; Harper *et al.* 2007; Hansen *et al.* 2010).

Deforestation rates in some parts of the coast had decreased substantially after 2000, but rates remained relatively high near Dar es Salaam (Fig. 1). The rates in Pwani region remained constant after 2000, unlike all other regions. Pwani still suffers the impacts of high, and probably increasing, demand from Dar es Salaam for charcoal and wood for building materials (Ahrends *et al.* 2010). Timber harvesting for export was also a major issue in the early 2000s, with Rufiji and Pwani districts accounting for 70 % of all harvested timber in southern Tanzania at that time (Milledge *et al.* 2007). In the far south, in Mtwara, there was an expansion of new agricultural land. The low rates of forest loss in the Tanga region can be explained by exhaustion of forest outside reserves.

The area of forest loss within reserves is nine times slower than in the unreserved forest lands, mirroring global trends (Scharlemann *et al.* 2010). However, reserves are not immune from forest loss. Significant losses are being experienced in

some reserved areas, especially the FRs near Dar es Salaam, with forest being lost primarily to charcoal burning (Ahrends *et al.* 2010). In Kiwengoma, in Pwani region, for example, a combination of logging and agricultural pressure resulted in forest loss and degradation (Stubblefield 1994; Dallu 2004; Ahrends *et al.* 2010). Tong'omba Forest Reserve, in Lindi region near the border with Pwani (Fig. 1), is highly threatened by logging activities, exacerbated by improved road access (Stubblefield 1994; Milledge *et al.* 2007). We believe deforestation in the reserved areas of Mtwara is associated with both the particularly high rural population density there and the lack of reserve management capacity in this large and remote area. As reserves contain most of the remaining forest resource, they face increasing pressure to supply materials for human use and thus account for a significant proportion of the  $\text{CO}_2$  emissions.

### Caveats

Estimation of forest cover and change using satellite imagery is relatively difficult in this region because of frequent cloud cover and transitional vegetation types. The impact of cloud cover is reflected in the CF values, and estimates for Dar es Salaam and Pwani were most affected. Because most of these areas were not covered by clouds, the percentage rates should be representative of the entire regions while the absolute rates are minimum potential rates. Classifying land cover change in transitional landscapes is challenging, however our approach, which classifies multiple dates of imagery in a single process, minimizes potential effects from classifying images separately and takes into account phenological variations between dates.

Another challenge in reporting statistics is potentially inaccurate delineations of reserve boundaries. The files we used were the best available, but still may contain significant errors. Calculations of forest area, carbon stocks and emissions may need to be revised when improved boundary data become available. Most of the reserved areas have been assigned an IUCN protected area category and they require a detailed review to assess which of them meet the formal definition of a protected area.

While a coarse continental product, the carbon map produced by Baccini *et al.* (2008) agreed with our research data. For example, within the 10 km buffer area around Dar es Salaam city, Baccini *et al.* (2008) found the average forest biomass was  $9 \pm 4.39 \text{ tC ha}^{-1}$ , while Ahrends *et al.*'s (2010) field estimates produced an average of  $4 \pm 2.84 \text{ tC ha}^{-1}$ . Baccini *et al.* (2008) found forest further than 220 km from Dar es Salaam had an average carbon density biomass of  $57 \pm 15.89 \text{ tC ha}^{-1}$  while Ahrends *et al.*'s (2010) field study found an average of  $52 \pm 4.99 \text{ tC ha}^{-1}$ . The values used in this study are also similar to those determined from field measurements in Kenyan dry forests ( $50 \text{ tC ha}^{-1}$ ; Glenday 2008). Baccini *et al.*'s (2008) biomass map, in accordance with the requirements of the Tier-1 approach described in the IPCC *Good Practice Guidance for Land Use, Land-Use Change and Forestry* (Penman *et al.* 2003), did not



differentiate emissions from different conversion processes, such as burning or selective logging; we assume that all CO<sub>2</sub> is released immediately after the deforestation event. Our estimates can be considered at the Tier-1 level. As biomass data based on higher IPCC tiers become available, emissions may be recalculated.

Beyond the challenges of estimating forest clearance and associated emissions, there are greater challenges in estimating forest degradation owing to selective logging and fuelwood collection and their associated emissions. We did not include any estimates for forest degradation, which may be best estimated by field sampling. Studies of tropical humid forest and areas severely affected by logging demonstrate the best potential for satellite estimation of forest degradation (Asner *et al.* 2002; Souza Jr *et al.* 2003, 2005; Souza Jr & Roberts 2005; Defries 2007). In dry forest regions, high spatial resolution satellite imagery and more thorough field work may be required. Mid-resolution images could be used to identify critical areas with intense degradation and assist in the design of measuring and monitoring activities in the field.

The reduction in emissions due to deforestation that we estimated represents a significant contribution towards the international goal of reducing global greenhouse gas emissions. However, we cannot claim whether this is a result of policy or exhaustion of forest near urban centres, such as Dar es Salaam. In addition, we cannot assume that deforestation reductions in this area were not offset by increases in other areas, such as through national or international leakage. Much of the deforestation in the 1990s was associated with international logging operations, with a high potential for international leakage as politics, access and logging costs evolve among tropical countries. Coastal Tanzania still has significant forest cover area, both in terms of carbon storage and especially in terms of biodiversity conservation. However, much of its forest remains unprotected. Domestic demand for fuelwood and international demand for high-value timber products continue to threaten remaining forests.

## CONCLUSIONS

Tanzania can benefit greatly from international agreements on climate change because it possesses significant remaining areas of forest after relatively high rates of recent deforestation. Policies must be implemented to reduce emissions from deforestation and forest degradation (REDD+, see URL <http://www.un-redd.org/AboutREDD/tabid/582/Default.aspx>) and initiate forest restoration programmes (Miles *et al.* 2009; Milledge 2009; UNFCCC [United Nations Framework Convention on Climate Change] 2009; Burgess *et al.* 2010). Reducing emissions may not only help mitigate climate change, but may also provide important additional benefits, such as the conservation of biodiversity and the maintenance of critical ecosystem services (Stickler *et al.* 2009; Harvey *et al.* 2010). REDD+ is an attractive mitigation option owing to its cost-effectiveness and ready availability (Nabuurs *et al.* 2007; Stern 2007; Eliasch 2008). The results from our

study may provide the initial basis for determining a national emissions baseline and a regular monitoring programme.

## ACKNOWLEDGEMENTS

This work was supported by the Critical Ecosystem Partnership Fund (CEPF). CEPF is a joint initiative of, Conservation International, the Global Environment Facility, the Government of Japan, l'Agence Française de Développement, the MacArthur Foundation and the World Bank. A fundamental goal is to ensure civil society is engaged in biodiversity conservation. We thank Kellee Koenig for creating the map in this paper, John Watkin of CEPF for his support and enthusiasm for this research, Ned Horning for his assistance in managing the project, Antje Ahrends for sharing data on biomass and the three anonymous reviewers for the constructive comments.

## References

- Ahrends, A., Burgess, N.D., Milledge, S.A.H., Bulling, M.T., Fisher, B., Smart, J.C.R., Clarke, G.P., Mhoro, B.E. & Lewis, S.L. (2010) Predictable waves of sequential forest degradation and biodiversity loss spreading from an African city. *Proceedings of the National Academy of Sciences USA* **107**(33): 14556–14561.
- Anderson, M. & Holm, H. (1990) The energy market in Dar es Salaam: a minor field study. Working paper 127. International Rural Development Centre, Swedish University of Agricultural Sciences, Uppsala, Sweden.
- Asner, G.P., Keller, M., Pereira Jr, R. & Zweede, J. C. (2002) Remote sensing of selective logging in Amazonia: assessing limitations based on detailed field observations, Landsat ETM+ and textural analysis. *Remote Sensing of Environment* **80** (3):483–496.
- Baccini, A., Laporte, N., Goetz, S.J., Sun, M. & Dong, H. (2008) A first map of tropical Africa's above-ground biomass derived from satellite imagery. *Environmental Research Letters* **3**(045011):1–9.
- Brooks, T.M., Mittermeier, R.A., Mittermeier, C.G., da Fonseca, G.A.B., Rylands, A.B., Konstant, W.R., Flick, P., Pilgrim, J., Oldfield, S., Magin, G. & Hilton-Taylor, C. (2002) Habitat loss and extinction in the hotspots of biodiversity. *Conservation Biology* **16**(4): 909–923.
- Burgess, N.D. & Clarke, G.P., eds (2000) *Coastal Forests of Eastern Africa*. Gland, Switzerland and Cambridge, UK: IUCN Forest Conservation Programme.
- Burgess, N.D. & Muir, C., eds (1994) The coastal forests of Eastern Africa: biodiversity and conservation. Coastal Forest Research Programme Technical Report No. 25. The Society for Environmental Exploration, Royal Society for the Protection of Birds, and the University of Dar es Salaam, London, UK and Dar es Salaam, Tanzania.
- Burgess, N.D., Bahane, B., Clairs, T., Danielsen, F., Dalsgaard, S., Funder, M., Hagelberg, N., Harrison, P., Haule, C., Kabalimu, K., Kilahama, F., Kilawe, E., Lewis, S.L., Lovett, J.C., Lyatuu, G., Marshall, A.R., Meshack, C., Miles, L., Munishi, P.K.T., Nashanda, E., Shirima, D., Swetnam, R.D., Willcock, S., Williams, A. & Zahabu, E. (2010) Getting ready for REDD+ in Tanzania: a case study of progress and challenges. *Oryx* **44**(3):339–351.



- Burgess, N.D., Clarke, G.P. & Rodgers, W.A. (1998) Coastal forests of eastern Africa: status, species endemism and its possible causes. *Biological Journal of the Linnean Society* **64**: 337–367.
- Burgess, N.D., Clarke, G.P., Madgwick, J., Robertson, S.A. & Dickinson, A. (2000) Status and vegetation; distribution and status. In: *Coastal Forests of Eastern Africa*, ed. N.D. Burgess & G.P. Clarke, pp. 71–81. Gland, Switzerland and Cambridge, UK: IUCN Forest Conservation Programme.
- Burgess, N.D., Gordon, I., Salehe, J., Sumbi, P., Doggart, N., Rodgers, A. & Clarke, G.P. (2004) Coastal forest of Eastern Africa. In: *Hotspots Revisited: Earth's Biologically Richest and Most Endangered Terrestrial Ecoregions*, ed. R.A. Mittermeier, P.R. Gil, M. Hoffman, J. Pilgrim, T. Brooks, C.G. Mittermeier, J. Lamoreux, & G.A.B. da Fonseca, pp. 231–239. Mexico City, Mexico: CEMEX/Agrupación Sierra Madre.
- Cairns, M.A., Brown, S., Helmer, E.H. & Baumgardner, G.A. (1997) Root biomass allocation in the world's upland forests. *Oecologia* **111**: 1–11.
- CEPF (2003) Ecosystem Profile: Eastern Arc Mountains and Coastal Forests of Tanzania and Kenya Biodiversity Hotspot. Critical Ecosystems Partnership Fund [www document]. URL [http://www.cepf.net/where\\_we\\_work/regions/africa/eastern\\_arc\\_coastal\\_forests/Pages/default.aspx](http://www.cepf.net/where_we_work/regions/africa/eastern_arc_coastal_forests/Pages/default.aspx)
- Christie, T., Steininger, M.K., Juhn, D. & Peal, A. (2007) Fragmentation and clearance of Liberia's forests: 1986–2000 *Oryx* **41**: 1–5.
- Clarke, G.P. (2000) Defining the Eastern Africa Coastal Forests. In: *Coastal Forests of Eastern Africa*, ed. N.D. Burgess & G.P. Clarke, pp. 9–26. Gland, Switzerland and Cambridge, UK: IUCN Forest Conservation Programme.
- Dallu, A.I.M. (2004) The coastal forests of Tanzania: a national synthesis report for the preparation of WWF East African Coastal Forest Ecoregion Programme. Forestry and Beekeeping Division, Ministry of Natural Resources and Tourism, Dar es Salaam, Tanzania: 29 pp.
- DeFries, R., Achard, F., Brown, S., Herold, M., Murdiyarsa, D., Schlamadinger, B. & Souza Jr, C. (2007) Earth observations for estimating greenhouse gas emissions from deforestation in developing countries *Environmental Science and Policy* **10**: 385–394.
- Eliasch, J. (2008) Climate change: financing global forests. The Eliasch review. Office of Climate Change, London, UK [www document]. URL <http://www.occ.gov.uk/activities/eliasch.htm>
- FAO (1995) Forest Resources Assessment 1990. Global synthesis. Forestry Paper 124. Food and Agriculture Organization of the United Nations, Rome, Italy.
- FAO (2010) Global forest resources assessment 2010: Country Report. United Republic of Tanzania. Food and Agriculture Organization of the United Nations, Rome, Italy.
- FBD (2007) Establishing mechanisms for payments for carbon environmental services in the Eastern Arc Mountains, Tanzania. Report compiled by R. Tipper, W. Garrett, J. Felton, J. Abbott, G. Onyango, M. Barasa, C. Sherrington of the Edinburgh Centre for Carbon for Conservation and Management of the Eastern Arc Mountain Forests. Forestry and Beekeeping Division, Ministry of Natural Resources and Tourism. Morogoro, Tanzania.
- Foley, J.A., DeFries, R., Asner, G.P., Barford, C., Bonan, G., Carpenter, S.R., Chapin, F.S., Coe, M.T., Daily, G.C., Gibbs, H.K., Helkowski, J.H., Holloway, T., Howard, E.A., Kucharik, C.J., Monfreda, C., Patz, J.A., Prentice, I.C., Ramankutty, N. & Snyder, P.K. (2005) Global consequences of land use. *Science* **309**(5734): 570–574.
- Glenday, J. (2008) Carbon storage and emissions offset potential in an African dry forest, the Arabuklo-Sokoke Forest, Kenya. *Environmental Monitoring Assessment* **142**: 85–95.
- Hamilton, A.C. & Bensted-Smith, R. eds (1989) *Forest Conservation in the East Usambara Mountains, Tanzania*. Gland, Switzerland and Cambridge, UK: IUCN Tropical Forest Programme: 392 pp.
- Hansen, M.C., Stehman, S.V., Potapov, P.V., Loveland, T.R., Townshend, J.R.G., DeFries, R.S., Pittman, K.W., Stolle, F., Steininger, M.K., Carroll, M. & Dimiceli, C. (2008) Humid tropical forest clearing from 2000 to 2005 quantified using multi-temporal and multi-resolution remotely sensed data. *Proceedings of the National Academy of Sciences USA* **105**(27): 9439–9444.
- Hansen, M.C., Stehman, S.V. & Potapov, P.V. (2010) Quantification of global gross forest cover loss. *Proceedings of the National Academy of Sciences USA* **107**(20): 9025–9026.
- Harper, G.J., Steininger, M.K., Tucker, C.J., Juhn, D. & Hawkins, F. (2007) Fifty years of deforestation and forest fragmentation in Madagascar. *Environmental Conservation* **34**(4): 325–333.
- Harvey, C.A., Dickson, B. & Kormos, C. (2010). Opportunities for achieving biodiversity conservation through REDD. *Conservation Letters* **3**: 53–61.
- Houghton, R.A., Skole, D.L., Nobre, C.A., Hackler, J.L., Lawrence, K.T. & Chomentowski, W.H. (2000) Annual fluxes of carbon from deforestation and regrowth in the Brazilian Amazon. *Nature* **403**(6767): 301–304.
- Houghton, R.A. (2007) Balancing the global carbon budget. *Annual Review of Earth and Planetary Science* **35**: 313–347.
- ILRI (2007) Administrative units of Tanzania. International Livestock Research Institute, Nairobi, Kenya [www document]. URL <http://www.ilri.org/gis>
- IPCC (2007) *Climate Change 2007: The Physical Science Basis*. Intergovernmental Panel on Climate Change. Cambridge, UK: Cambridge University Press [www document]. URL <http://www.meteo.bg/meteorology/SPM2feb07.pdf>
- Jaramillo, V.J., Kauffman, J.B., Rentería-Rodríguez, L., Cummings, D.L. & Ellingson, L.J. (2003) Biomass, carbon, and nitrogen pools in Mexican tropical dry forest landscapes. *Ecosystems* **6**: 609–629.
- Miles, L., Kabalimu, K., Bahane, B., Ravilious, C., Dunning, E., Bertzy, M., Kapos, V. & Dickson, B. (2009) Carbon, biodiversity and ecosystem services: exploring co-benefits. Report prepared by UNEP–WCMC, Cambridge, UK, and Forestry and Beekeeping Division, Ministry of Natural Resources and Tourism, UN-REDD Programme, Dar es Salaam, Tanzania.
- Milledge, S.A.H., Gelas, I.K. & Ahrends, A. (2007) Forestry, governance and national development: lessons learned from a logging boom in southern Tanzania. Report, TRAFFIC East/Southern Africa/Tanzania Development Partners Group/Ministry of Natural Resources of Tourism, Dar es Salaam, Tanzania: 252 pp.
- Milledge, S.A.H. (2009) Getting REDDy in Tanzania: principles, preparations and perspectives. *The Arc Journal* **24**: 3–6.
- Murphy, P.G. & Lugo, A.E. (1995) Dry forests of Central America and the Caribbean Islands. In: *Seasonally Dry Tropical Forests*, ed. S.H. Bullock, H.A. Mooney, & E. Medina, pp. 1–8. Cambridge, UK: Cambridge University Press.
- Nabuurs, G.J., Maser, O., Andrasko, K., Benitez-Ponce, P., Boer, R., Dutschke, M., Elsiddig, E., Ford-Robertson, J., Frumhoff, P., Karjalainen, T., Krankina, O., Kurz, W.A., Matsumoto, M., Oyhantcabal, W., Ravindranath, N.H., Sanz Sanchez,

- M.J. & Zhang, X. (2007) Forestry. In: *Climate Change 2007: Mitigation. Contribution of Working Group III to the Fourth Assessment Report of the Intergovernmental Panel on Climate Change*, ed. B. Metz, O.R. Davidson, P.R. Bosch, R. Dave, L.A. Meyer. New York, USA and Cambridge, UK: Cambridge University Press [www document]. URL [http://www.ipcc.ch/publications\\_and\\_data/ar4/wg3/en/ch9.html](http://www.ipcc.ch/publications_and_data/ar4/wg3/en/ch9.html)
- Olson, D.M. & Dinerstein, E. (1998) The Global 200: a representation approach to conserving the Earth's most biologically valuable ecoregions. *Conservation Biology* 12: 502–515.
- Olson, D.M., Dinerstein, E., Wikramanayake, E.D., Burgess, N.D., Powell, G.V.N., Underwood, E.C., D'amico, J.A., Itoua, I., Strand, H.E., Morrison, J.C., Loucks, C.J., Allnutt, T.F., Ricketts, T.H., Kura, Y., Lamoreux, J.F., Wettengel, W.W., Hedao, P. & Kassem, K.R. (2001) Terrestrial ecoregions of the world: a new map of life on earth. *BioScience* 51(11): 933–938.
- Ongara, O. (1991) Forestry Action Plan for Coast Region 1990–2007. Report, Regional Development Director's Office, Kibaha, Tanzania.
- Penman, J., Gytarsky, M., Hiraishi, T., Krug, T., Kruger, D., Pipatti, R., Buendia, L., Miwa, K., Ngara, T., Tanabe, K. & Wagner, F., (2003) Good practice guidance for land use, land-use change and forestry. Report, IPCC National Greenhouse Gas Inventories Programme and Institute for Global Environmental Strategies, Kanagawa, Japan.
- Scharlemann, J.P.W., Kapos, V., Campbell, A., Lysenko, I., Burgess, N.D., Hansen, M.C., Gibbs, H.K., Dickson, B. & Miles, L. (2010) Securing tropical forest carbon: the contribution of protected areas to REDD. *Oryx* 44(3): 352–357.
- Schipper, J. & Burgess, N. (2003) Ecoregional reports: Northern Zanzibar–Inhambane coastal Forest Mosaic. Eastern and southern Africa Bioregions, WWF-US [www document]. URL <http://www.nationalgeographic.com/wildworld/profiles/terrestrial/at/at0109.html>
- Souza Jr, C., Firestone, L., Silva, M.L. & Roberts, D.A. (2003) Mapping forest degradation in the Eastern Amazon from SPOT 4 through spectral mixture models. *Remote Sensing of Environment* 87 (4): 494–506.
- Souza Jr, C. & Roberts, D.A. (2005). Mapping forest degradation in the Amazon region with Ikonos images. *International Journal of Remote Sensing* 26(3):425–429.
- Souza Jr, C., Roberts, D.A. & Cochrane, M.A. (2005) Combining spectral and spatial information to map canopy damage from selective logging and forest fires. *Remote Sensing of Environment* 98 (2): 329–343.
- Stattersfield, A.J., Crosby, M.J., Long, A.J. & Wege, D.C. (1998) *Endemic Bird Areas of the World: Priorities for Biodiversity Conservation*. Birdlife Conservation Series no. 7. Cambridge, UK: Birdlife International.
- Stern, N. (2007) *The Economics of Climate Change: The Stern Review*. Cambridge, UK: Cambridge University Press [www document]. URL [http://treasury.gov.uk/sternreview\\_index.htm](http://treasury.gov.uk/sternreview_index.htm)
- Stickler, C.M., Nepstad, D.C., Coe, M.T., McGrath, D.G., Rodrigues, H.O., Walker, W.S., Soares-Filho, B.S. & Davidson, E.A. (2009). The potential ecological costs and cobenefits of REDD: a critical review and case study from the Amazon region. *Global Change Biology* 15: 2803–2824.
- Stubblefield, L.K., ed. (1994) Management summaries for 25 coastal forests in Tanzania. Frontier Tanzania Report No. 12. The Society for Environmental Exploration and the University of Dar es Salaam, Tanzania: 90 pp.
- Tabor, K., Burgess, N.D., Mbilinyi, B.P., Kashaigili, J.J. & Steininger, M.K. (2010) Forest and woodland cover and change in coastal Tanzania and Kenya, circa 1990 to circa 2000. *The Journal of East Africa Natural History* 99(1): 19–45.
- Tucker, C.J., Grant, D.M. & Dykstra, J.D. (2004) NASA's global orthorectified Landsat data set. *Photogrammetric Engineering and Remote Sensing* 70(3): 313–322.
- UNEP-WCMC & IUCN (2009) World Database on Protected Areas 2009 Annual Release. United Nations Environment Programme–World Conservation Monitoring Centre and IUCN World Commission on Protected Areas, Cambridge, UK and Gland, Switzerland.
- UNFCCC (2009) Policy approaches and positive incentives on issues relating to reducing emissions from deforestation and forest degradation in developing countries; and the role of conservation, sustainable management of forests and enhancement of forest carbon stocks in developing countries. United Nations Framework Convention on Climate Change. Ad Hoc Working Group on Long-Term Cooperative Action Under the Convention, Eighth Session, At the Conference of the Parties Fifteenth Session, 7–18 December 2009, Copenhagen, Denmark [www document]. URL [http://unfccc.int/..fact\\_sheet\\_reducing\\_emissions\\_from\\_deforestation.pdf](http://unfccc.int/..fact_sheet_reducing_emissions_from_deforestation.pdf)
- Van der Werf, G.R., Morton, D.C., DeFries, R.S., Olivier, J.G.J., Kasibhatla, P.S., Jackson, R.B., Collatz, G.J. & Randerson, J.T. (2009) CO<sub>2</sub> emissions from forest loss. *National Geoscience* 2: 737–738.