

## Research Article

**Cite this article:** Lade SJ *et al.* (2019).

Potential feedbacks between loss of biosphere integrity and climate change. *Global Sustainability* 2, e21, 1–15. <https://doi.org/10.1017/sus.2019.18>

Received: 3 January 2019

Revised: 6 May 2019



Accepted: 2 September 2019

**Keywords:**

Earth systems (land, water and atmospheric); ecology and biodiversity; modelling and simulation

**Author for correspondence:** Dr Steven Lade,  
E-mail: [steven.lade@su.se](mailto:steven.lade@su.se)

# Potential feedbacks between loss of biosphere integrity and climate change

Steven J. Lade<sup>1,2,3</sup> , Jon Norberg<sup>1</sup>, John M. Anderies<sup>4</sup>, Christian Beer<sup>3,5,6</sup>, Sarah E. Cornell<sup>1</sup>, Jonathan F. Donges<sup>1,7</sup>, Ingo Fetzer<sup>1,3</sup>, Thomas Gasser<sup>8</sup>, Katherine Richardson<sup>9</sup> , Johan Rockström<sup>1,7</sup> and Will Steffen<sup>1,2</sup>

<sup>1</sup>Stockholm Resilience Centre, Stockholm University, Stockholm, Sweden; <sup>2</sup>Fenner School of Environment and Society, The Australian National University, Canberra, Australian Capital Territory, Australia; <sup>3</sup>Bolin Centre for Climate Research, Stockholm University, Stockholm, Sweden; <sup>4</sup>School of Sustainability and School of Human Evolution and Social Change, Arizona State University, Tempe, AZ, USA; <sup>5</sup>Department of Environmental Science and Analytical Chemistry (ACES), Stockholm University, Stockholm, Sweden; <sup>6</sup>Institute of Soil Science, Department of Earth Sciences, Universität Hamburg, Hamburg, Germany; <sup>7</sup>Earth System Analysis, Potsdam Institute for Climate Impact Research, Member of the Leibniz Association, Potsdam, Germany; <sup>8</sup>International Institute for Applied Systems Analysis, Laxenburg, Austria and <sup>9</sup>Center for Macroecology, Evolution, and Climate, Globe Institute, University of Copenhagen, Copenhagen, Denmark

**Non-technical abstract**

Individual organisms on land and in the ocean sequester massive amounts of the carbon emitted into the atmosphere by humans. Yet the role of ecosystems as a whole in modulating this uptake of carbon is less clear. Here, we study several different mechanisms by which climate change and ecosystems could interact. We show that climate change could cause changes in ecosystems that reduce their capacity to take up carbon, further accelerating climate change. More research on – and better governance of – interactions between climate change and ecosystems is urgently required.

**Technical abstract**

Individual responses of terrestrial and marine species to future climate change will affect the capacity of the land and ocean to store carbon. How system-level changes in the integrity of the biosphere interact with climate change is more uncertain. Here, we explore the consequences of different hypotheses on the interactions between the climate–carbon system and the integrity of the terrestrial and marine biospheres. We investigate mechanisms including impairment of terrestrial ecosystem functioning due to lagged ecosystem responses, permafrost thaw, terrestrial biodiversity loss and impacts of changes in marine biodiversity on the marine biological pump. To investigate climate–biosphere interactions involving complex concepts such as biosphere integrity, we designed and implemented conceptual representations of these climate–biosphere interactions in a stylized climate–carbon model. We find that all four classes of interactions amplify climate change, potentially contributing up to an additional 0.4°C warming across all representative concentration pathway scenarios by the year 2100 and potentially turning the terrestrial biosphere into a net carbon source, although uncertainties are large. The results of this preliminary quantitative study call for more research on – and better integrated governance of – the interactions between climate change and biosphere integrity, the two core ‘planetary boundaries’.

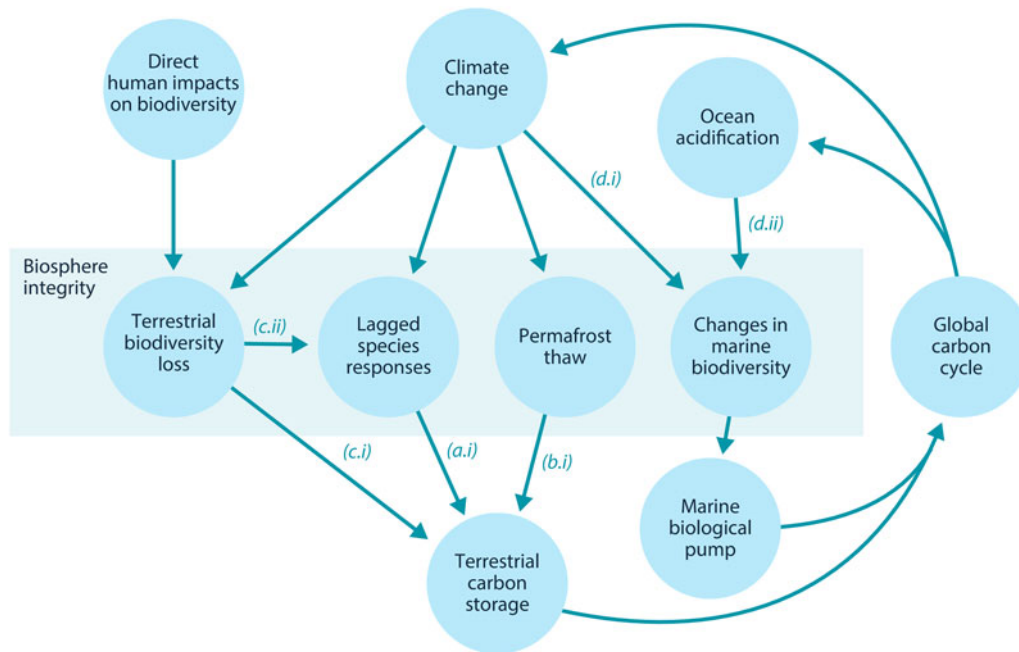
**Social media summary**

Healthy ecosystems are critical for combating climate change.

**1. Introduction**

The global environment that we experience today is a product of millions of years of co-evolution of climate and the biosphere (Lenton *et al.*, 2004). Concern over human perturbations of the environment (such as water use, the introduction of novel substances into the environment, interference in biogeochemical cycles and land-use change) frequently stems from concern about how these perturbations impact the ability of the climate or the biosphere to support humans. Although interactions between the biosphere and the physical climate system are critical in determining the state of the Earth system, ecosystem-level feedbacks between the biosphere and climate system are not routinely included in projections of or policy for climate change. For example, biodiversity conservation is seen at best as a co-benefit of carbon sequestration measures, not as a strategy that could mitigate further climate change (Díaz *et al.*, 2009);

© The Author(s) 2019. This is an Open Access article, distributed under the terms of the Creative Commons Attribution licence (<http://creativecommons.org/licenses/by/4.0/>), which permits unrestricted re-use, distribution, and reproduction in any medium, provided the original work is properly cited.



**Fig. 1.** Relationships between biosphere integrity mechanisms. The four items within the central box are the four types of biosphere integrity loss considered here. In this model, these biosphere integrity mechanisms participate in a feedback with the global carbon cycle.

projections of greenhouse gas releases from degrading permafrost soils, which comprise a loss of integrity of tundra biomes, are based on simplified approaches (Koven *et al.*, 2015) and not part of Earth system models (Ciais *et al.*, 2013); and responses of marine ecosystems to acidification and temperature are considered important but rarely included in Earth system models (Ciais *et al.*, 2013).

In the planetary boundary framework (Steffen *et al.*, 2015), which delimits the biophysical conditions needed to maintain the Earth system in a ‘safe’ Holocene-like state, the two ‘core’ planetary boundaries of climate change and biosphere integrity represent the geosphere and the biosphere of the Earth system (Steffen *et al.*, 2015). We use the terminology of ‘biosphere integrity’, broadly defined as the long-term maintenance of key structures and functions of the biosphere (Steffen *et al.*, 2015), as this emphasizes that aspects of the biosphere at multiple scales beyond individual plant physiology, such as ecosystem functioning, are crucial for climate–biosphere interactions. Here, we are specifically interested in ecosystem functions related to climate and the carbon cycle such as the capacity to take up carbon and the capacity to respond to climate change. Biosphere integrity builds on earlier concepts such as biological integrity (Karr, 1990), ecological integrity (Mora, 2017; Parrish *et al.*, 2003) and ecosystem integrity (Dorren *et al.*, 2004) by viewing this ‘integrity’ at the scale of the Earth system.

Here, we examine how loss of biosphere integrity could generate significant feedbacks to the climate system on policy-relevant timescales of twenty-first-century climate change. This initial study considers only climate–biosphere interactions involving carbon storage, ignoring other biosphere feedbacks such as albedo changes or changes to the hydrological cycle that could also impact climate (Chapin *et al.*, 2008). We focus on the effects of four categories of biosphere integrity loss on carbon storage that are not commonly included in comprehensive global models (Figure 1): (1) Impairment of the capacity of terrestrial ecosystems to store carbon due to lagged responses to climate change. Lagged

species responses are known to be an important feature of the terrestrial biosphere’s response to climate change (Loarie *et al.*, 2009; Wieczynski *et al.*, 2019), although the magnitude of its effect on the carbon cycle is uncertain. (2) Release of carbon from thawing permafrost. The failure of tundra ecosystems to adapt to climate change is expected to release large amounts of carbon (Chadburn *et al.*, 2017; Ciais *et al.*, 2013; Koven *et al.*, 2015; MacDougall *et al.*, 2015; Schaefer *et al.*, 2014; Schneider von Deimling *et al.*, 2015; Schuur *et al.*, 2015). Detailed land surface models of permafrost have advanced understanding of potential greenhouse gas releases (Burke *et al.*, 2017; Ekici *et al.*, 2014; Guimberteau *et al.*, 2018; Lawrence *et al.*, 2015; Porada *et al.*, 2016), but these models are rarely incorporated into comprehensive global models (Ciais *et al.*, 2013; Hagemann *et al.*, 2016). (3) Effects of terrestrial biodiversity loss both directly on productivity and indirectly via reduced resilience. Biodiversity loss is a major global environmental problem (Cardinale *et al.*, 2012; House *et al.*, 2005), which could have significant impacts on carbon storage, though the degree to which biodiversity loss will impact the global carbon cycle remains uncertain. Spatially explicit global vegetation models such as LPJmL (Schaphoff *et al.*, 2018) capture major biogeophysical and biogeochemical controls on the dynamic distributions of a few plant functional types, but they include limited aspects of biodiversity (Prentice *et al.*, 2007). Local models such as forest succession models (Morin *et al.*, 2018) can display realistic biodiversity effects but would be difficult to implement at the global scale. New kinds of global ecosystem models, such as the Madingley model (Purves *et al.*, 2013), focus on generic properties of dynamic ecosystems, but these detailed models face computational and parameterization challenges in linking to global biogeophysical and biogeochemical dynamics. (4) Changes in the marine biological pump due to changes in marine biodiversity. The marine biological pump, which transports carbon from the upper ocean to the deep ocean, is an important part of the global carbon cycle. Changes

to marine biodiversity caused by climate change may affect the strength of this pump (Beaugrand *et al.*, 2010; Riebesell *et al.*, 2017; Segsneider & Bendtsen, 2013), but the consequences of changes in marine biodiversity are rarely included in comprehensive global models (Ciais *et al.*, 2013).

Since the biosphere integrity mechanisms listed above are difficult to implement in comprehensive global models, we here take an approach at the opposite extreme of complexity. We extend a globally aggregated climate–carbon cycle model (Lade *et al.*, 2018) to estimate the potential magnitudes of globally aggregated feedbacks between biosphere integrity and climate change. We assess the strengths of these mechanisms using metrics developed for climate–carbon cycle feedbacks (Friedlingstein *et al.*, 2001, 2006; Gregory *et al.*, 2009; Zickfeld *et al.*, 2011). Our model and its results are not intended to be definitive predictions, but rather to stimulate discussion and research on the role of biosphere integrity in climate change.

## 2. Methods

To model interactions between biosphere integrity and climate, we modified the climate–carbon cycle model of Lade *et al.* (2018). This model studies the dynamics of globally aggregated carbon stocks (in PgC) on land,  $c_p$ , in the atmosphere,  $c_a$ , and in the ocean mixed layer,  $c_m$ , as well as global mean surface temperature relative to pre-industrial  $\Delta T = T - T_0$  (in K). The model represents exchanges of carbon between atmosphere and land via net primary production, respiration and carbon emissions from land-use change, and between atmosphere and the ocean mixed layer via diffusion of carbon dioxide. Global mean surface temperature responds in the model to changing atmospheric carbon stocks with a specified climate sensitivity and with a time lag due to ocean heat capacity. Carbon dioxide is released into the atmosphere by fossil fuel combustion according to the representative concentration pathway (RCP) scenarios and is exported to the deep ocean by the solubility pump. The model includes climate–carbon and concentration–carbon feedbacks (Friedlingstein *et al.*, 2001) since the processes that exchange carbon between different pools in the model depend on atmospheric carbon stocks (specifically, net primary productivity and ocean–atmosphere diffusion) and temperature (terrestrial respiration, the solubility pump and the solubility of CO<sub>2</sub> in the ocean).

There are many simple models that are used to gain a deeper understanding of climate–carbon cycle feedbacks and that can even emulate the outputs of comprehensive coupled atmosphere–ocean and carbon cycle models (Anderies *et al.*, 2013; Gasser *et al.*, 2017; Gregory *et al.*, 2009; Joos *et al.*, 1996; Meinshausen *et al.*, 2011a, 2011b; Raupach, 2013; Raupach *et al.*, 2011). We specifically used the model of Lade *et al.* (2018) as a starting point because:

- Its global aggregation of carbon stocks is of appropriate complexity for the coarse-grained biosphere integrity mechanisms we seek to include.
- It includes aggregated representations of key carbon cycle processes. For example, Raupach's Simple Carbon–Climate Model (Raupach, 2013; Raupach *et al.*, 2011) uses multiple greenhouse gases, but does not include a mechanism-based description of the marine component of the carbon cycle such as the solubility and biological carbon pumps.
- It models processes relevant on our timescale of interest, a policy-relevant timescale to 2100.
- It emulates the results of more complex models to within model spread. Specifically, in Lade *et al.* (2018), the future carbon stocks

and temperatures generated by the model were tested against historical changes and the future projections of comprehensive climate–carbon models as reported by the Intergovernmental Panel on Climate Change (IPCC) Fifth Assessment Report (AR5) (Ciais *et al.*, 2013; Collins *et al.*, 2013). The results of the model were also tested against the various climate–carbon cycle feedback metrics reported by Arora *et al.* (2013), Friedlingstein *et al.* (2006) and Zickfeld *et al.* (2011).

In this section, we review Lade *et al.*'s model and describe our modifications to account for the biosphere integrity mechanisms in Table 1. These mechanisms in turn result in the new climate–carbon cycle feedbacks shown in Figure 1. Loss of biosphere integrity occurs when these mechanisms are activated: when species responses lag behind climate change, leading to loss of terrestrial carbon (a.i); when carbon is emitted from permafrost (b.i); when loss of biodiversity occurs, leading in turn to loss of capacity to take up carbon (c.i) or capacity to respond to climate change (c.ii); or when temperature changes (d.i) or ocean acidification (d.ii) cause changes in marine biodiversity that weaken the marine biological pump. Undisturbed biosphere integrity therefore corresponds to no lags in species responses, no carbon emitted from permafrost, no loss of biodiversity and no weakening of the biological pump due to changes in marine biodiversity. We reiterate that some of these mechanisms are highly controversial and their quantitative characteristics are highly unconstrained.

A complete list of parameters is available in Table 2. Two new parameters ( $K_A$ ,  $Q_p$ ) were sufficiently well constrained that we could estimate plausible upper and lower bounds for those parameters. Those uncertainty estimates are described below. For all other new parameters, we estimated their uncertainty using the procedure described in Section 2.5.

### 2.1. Land

We added to the model of Lade *et al.* (2018) three factors affecting terrestrial carbon storage: response lag, biodiversity loss and permafrost thaw.

#### 2.1.1. Response lag

Changes in plant photosynthesis and plant and soil respiration rates due to climate change are commonly included in comprehensive Earth system models, although large uncertainties remain about their responses to future climates (Ahlström *et al.*, 2015; Arora *et al.*, 2013). Other processes may, however, limit the rate at which species communities can respond in time (such as phenology (Xia *et al.*, 2015) and community trait responses (Norberg *et al.*, 2001)) and in space (such as range shifts (Davis & Shaw, 2001)) to climate change (Essl *et al.*, 2015; Svenning & Sandel, 2013) (Table 1a.i), particularly to the present very rapid rate of climatic change (Gaffney & Steffen, 2017). Slow or unsynchronized changes in phenology could severely disrupt ecosystem functioning. For example, shifts in insect hatching dates or the timing of vegetation development (Visser, 2008) can disrupt interactions such as plant–pollinator relationships (Memmott *et al.*, 2007), in turn diminishing the ecosystem's primary productivity (Xia *et al.*, 2015). Changes in the spatial distribution of climate patterns will render some species communities unsuited to their current location, which together with limited rates of migration (Settele *et al.*, 2015) may also significantly affect carbon storage (Ahlström *et al.*, 2015).

**Table 1.** Relationships between climate change and the biosphere. This is a limited selection of the literature and is not intended to be exhaustive.

Effect of climate change on terrestrial or marine carbon storage	Evidence
<i>(a) Response lag</i>	
i. Lagged species responses leads to lower short-term carbon storage	Mechanisms such as slow or mismatched phenological changes (Visser, 2008) or limited migration speeds (Loarie <i>et al.</i> , 2009) with local empirical support but rarely modelled
<i>(b) Permafrost thaw</i>	
i. Climate change will lead to carbon emissions from permafrost	Widespread scientific agreement (Ciais <i>et al.</i> , 2013), although the magnitude of emissions is uncertain (Ciais <i>et al.</i> , 2013; Koven <i>et al.</i> , 2015; Schaefer <i>et al.</i> , 2014; Schneider von Deimling <i>et al.</i> , 2015)
<i>(c) Terrestrial biodiversity loss</i>	
i. Biodiversity loss directly reduces productivity and therefore carbon storage capacity	Supported by some local studies (Cardinale <i>et al.</i> , 2012; Castro-Izagirre <i>et al.</i> , 2016; Liang <i>et al.</i> , 2016; Poorter <i>et al.</i> , 2015; Ricketts <i>et al.</i> , 2016; Van de Perre <i>et al.</i> , 2018), although some other studies find no effect (Adair <i>et al.</i> , 2018; Sullivan <i>et al.</i> , 2017; van der Plas, 2019). Theoretical arguments based on less biodiverse systems being less able to exploit niches (Liang <i>et al.</i> , 2015) or biodiversity loss selectively targeting tree species with high carbon capture capacity
ii. Biodiversity loss reduces the resilience of species communities	Theoretical support (Folke <i>et al.</i> , 2004; Isbell <i>et al.</i> , 2015; Thompson <i>et al.</i> , 2009) and some local studies (Hautier <i>et al.</i> , 2015; House <i>et al.</i> , 2005), but limited empirical support for effect on carbon cycle in forests (Miles <i>et al.</i> , 2010)
<i>(d) Changes in marine biodiversity affecting marine biological pump</i>	
i. Temperature affects biological pump via marine biodiversity	Temperature effects are likely though direction and magnitude are uncertain (Segschneider & Bendtsen, 2013)
ii. Acidification affects biological pump via marine biodiversity	Acidification effects are likely, although magnitude is uncertain (Riebesell <i>et al.</i> , 2017)

The species trait modelling of Norberg (2004) introduces a state variable  $z$  that represents the optimal temperature for the growth rate of a species and may lag behind the current temperature  $T$ . By analogy, we introduce a state variable  $z$  that represents the global mean surface temperature to which global distributions of species are currently best adapted. The magnitude of the difference  $|\Delta z - \Delta T|$  is then the response lag. Note that  $\Delta z = z - z_0$  is different from the  $\Delta$  defined in Enquist *et al.* (2015). We characterize the change in  $z$ ,  $\Delta z$ , in response to changes in temperature  $\Delta T$  with two parameters as follows: the response rate  $r_g$ , where  $1/r_g$  gives the response timescale in response to small temperature perturbations. Ecosystems likely also have a maximum rate of response, which we parameterize with  $v_{\max}$ . We therefore write:

$$\frac{d\Delta z}{dt} = v_{\max} H(\Delta T, \Delta z) \tanh \frac{r_g(\Delta T - \Delta z)}{v_{\max}}. \quad (1)$$

In the absence of any other more plausible functional form, we chose the tanh function to ensure a linear response  $-r_g(\Delta T - \Delta z)$  for small  $\Delta T - \Delta z$  and a constant  $v_{\max}$  for large  $\Delta T - \Delta z$ . The function  $H$  represents a biodiversity-dependent further slowing of species responses, to be explained in further detail below. We assume that failure to respond to climatic changes sufficiently quickly – that is, a  $\Delta z < \Delta T$  – leads to a temporary loss of aggregated terrestrial carbon carrying capacity given by:

$$K_A |\Delta T - \Delta z|. \quad (2)$$

This formulation assumes that if ecosystem response  $\Delta z$  can at some point in the future ‘catch up’ to temperature changes  $\Delta T$ , then carbon storage will return to full capacity.

We calibrated  $r_g = 0.025 \text{ yr}^{-1}$  to match the observation that species migration and community composition responses over

the second half of the twentieth century have been approximately half the rate of climate change – that is,  $\Delta z/\Delta T \approx 0.5$  (Ash *et al.*, 2016; Bertrand *et al.*, 2011). For  $v_{\max}$ , we note that the current velocity of climate change (Loarie *et al.*, 2009) already exceeds most historical migration speeds (Davis & Shaw, 2001). We assume that ecosystems can adapt to at most  $v_{\max} = 0.2^\circ\text{C}/\text{decade}$  (Schellnhuber, 2010).

We estimate the parameter  $K_A$ , the sensitivity of carbon storage to response lag, as follows: two specific parts of the world’s forests that are predicted to lose significant amounts of carbon under near-term climate change are the Amazon rainforest and boreal forests. A recent review by Steffen *et al.* (2018) found a potential loss of carbon due to Amazon and boreal dieback under  $2^\circ\text{C}$  warming of 25 PgC (uncertainty range 15–55 PgC) and 30 PgC (uncertainty range 10–40 PgC). These two carbon sources sum to approximately 55 PgC (uncertainty range 25–95 PgC). Our simulations indicate a lag of  $|\Delta z - \Delta T| \approx 1^\circ\text{C}$  after  $2^\circ\text{C}$  warming; by Eq. (2) we therefore estimate  $K_A \approx 55 \text{ PgC}/\text{K}$  (uncertainty range 25–95 PgC/K). This estimate is consistent with the older result of Solomon and Kirilenko (1997), who investigated the difference in carbon storage between the extreme scenarios of no forest migration ( $\Delta z = 0$ , in our terminology) and instant biome migration ( $\Delta z = \Delta T$ ). They found carbon loss (combined soil and vegetation) under the no migration scenario compared to the instant migration scenario of 50 PgC/K (100 PgC under about  $2^\circ\text{C}$  temperature rise). A similar study by Van Minnen *et al.* (2000) found a response of 190 PgC/K (500 PgC under  $2.7^\circ\text{C}$  temperature rise), which we discard as an outlier.

### 2.1.2. Biodiversity loss

Biodiversity in terrestrial ecosystems is a critical factor for their primary productivity (Morin *et al.*, 2018; Weisser *et al.*, 2017) and their capacity to sink and store carbon (Zhang *et al.*, 2018).

**Table 2.** Model parameters and inputs. All parameters in (a) are from Lade *et al.* (2018); sources for (b) are described in the text. Uncertainties were only estimated for the new parameters for this paper, (b).

Name	Symbol	Value (uncertainty)
<i>(a) Carbon cycle parameters from Lade et al.</i>		
Pre-industrial carbon stocks	$c_{a0}$	589 PgC
	$c_{t0}$	1875 PgC
	$c_{m0}$	900 PgC
Transient climate sensitivity	$\lambda$	1.8 K
Climate lag	$\tau$	4 years
Pre-industrial net primary productivity	$NPP_0$	55 PgC/year
Solubility pump rate	$w_0$	0.1 year <sup>-1</sup>
Weakening of overturning circulation with climate change	$w_T$	10%/K
Atmosphere–ocean CO <sub>2</sub> diffusion	$D$	1 year <sup>-1</sup>
Revelle (buffer) factor	$r$	12.5
Reduction of solubility with temperature	$D_T$	4.23%/K
Pre-industrial biological pump	$B_0$	13 PgC/year
Temperature dependence of biological pump	$B_T$	3.2%/K
Terrestrial respiration temperature dependence	$Q_R$	1.72
Fertilization effect	$K_C$	0.3
Fossil fuel emissions	$e(t)$	RCP scenarios
Land-use emissions	$LUC(T)$	RCP scenarios
<i>(b) Parameters for biosphere–climate interactions new to this paper</i>		
Exponent in biodiversity–function relationship	$\theta$	0.26 (0–0.52)
Effect of climate change on biodiversity	$I_{CC}$	5 (0–10)%/K
Response relaxation rate	$r_g$	0.025 (0.0125–0.0500) year <sup>-1</sup>
Maximum response rate	$v_{max}$	0.02 (0.01–0.04)°C/year
Terrestrial carbon storage loss due to response lag	$K_A$	55 (25–95) PgC/K
Permafrost thaw temperature response	$p_T$	22.5 (10–40) PgC/K
Biodiversity-mediated acidification effects on marine biological pump	$B_A$	0.019 (0–0.038)%/µatm
Biodiversity-mediated temperature effects on marine biological pump	$B_{TB}$	0.7 (0–1.4)%/K
Biodiversity loss from direct human impacts	$I_d(t)$	10% until 2000; then additional 10%, 12%, 14% and 18% under RCP2.6, RCP4.5, RCP6 and RCP8.5, respectively, until 2100

Empirical studies of diversity–functionality relationships have mostly used species richness to measure diversity. To parameterize relationships involving biodiversity, we therefore use species richness, although theoretical arguments indicate measures that account for the functional role of species may more accurately predict ecosystem function (Diaz & Cabido, 2001). Where available, we use the biodiversity intactness index as a measure of biodiversity, since this abundance-weighted measure may approach the functional effect of species loss more closely than species richness (Mace *et al.*, 2014; Scholes & Biggs, 2005; Steffen *et al.*, 2015).

We modelled two classes of mechanisms that affect biodiversity. First, human activities such as land-use change and landscape homogenization are directly affecting biodiversity (Pereira *et al.*, 2010; Pimm *et al.*, 2014). Second, climate-mediated impacts, such as climatic changes leading to species becoming maladapted to their local climate, will also affect biodiversity (Bellard *et al.*, 2012). We coarsely represent the direct (e.g., land clearing) and

indirect (via climate change) effects on a globally aggregated measure of biodiversity,  $I$ :

$$I(\Delta T, \Delta z) = 1 - I_{CC}|\Delta T - \Delta z| - I_d(t), \quad (3)$$

where  $I_d(t)$  specifies direct human impacts on biodiversity and  $I_{CC}$  specifies the effect of climate change on biodiversity per ecosystem climate response lag  $|\Delta T - \Delta z|$ . Since terrestrial carbon is stored mostly in plants and soils, we envision the biodiversity modelled here as primarily composed of plant biodiversity. A globally aggregated measure may underestimate the effects of local and functional extinctions, which are likely to be more relevant for relationships between biodiversity and ecosystem function (Hooper *et al.*, 2012). On the other hand, introduced species could mitigate the impact of global biodiversity loss by locally increasing species diversity (Sax & Gaines, 2003).

For direct human impacts on biodiversity,  $I_d(t)$ , we assumed a conservative scenario of 10% loss from pre-industrial conditions until 2000, based on the 15% loss of biodiversity intactness index recently estimated by Newbold *et al.* (2016) using 2015 data. Projections of future impacts vary widely; for example, extinction rate estimates vary from 60% per century to a hundred-fold smaller (Pereira *et al.*, 2010; Pimm *et al.*, 2014). Here, we accommodate the differences in land-use change among the different RCP scenarios. We use predicted gross land-use transitions as a proxy for direct human impacts on biodiversity since net land-use transitions ignore phenomena that will impact biodiversity such as shifting cultivation (Yue *et al.*, 2018). We extend our historical 10% cumulative biodiversity loss scaled by comparing historical cumulative gross land-use transitions ( $2857 \times 10^6 \text{ km}^2$  over 1500–2000; Hurtt *et al.*, 2011) with predicted twenty-first-century gross land-use change transitions (2926, 3351, 4072 and  $5041 \times 10^6 \text{ km}^2$  under RCP2.6, RCP4.5, RCP6 and RCP8.5, respectively; Hurtt *et al.*, 2011). This scaling yields projected biodiversity losses in the twenty-first century (in addition to historical losses) of 10%, 12%, 14% and 18% under RCP2.6, RCP4.5, RCP6 and RCP8.5, respectively.

The impacts of climate change on biodiversity,  $I_{CC}$ , are also uncertain (Bellard *et al.*, 2012). Under high-emissions scenarios, climate-mediated loss of vascular plant biodiversity may reach 5% or more by 2100 (van Vuuren *et al.*, 2006). Since our model predicts  $T - z \approx 1$  by 2100, we set  $I_{CC} = 5\%/K$ , so that losses reach 5% by 2100. Under this parameterization, climate-mediated effects on biodiversity are initially unlikely to exceed direct human impacts, but may be comparable by 2100, matching the predictions of van Vuuren *et al.* (2006).

We identified two classes of mechanisms for how biodiversity loss may in turn affect carbon storage (Table 1c). First, while the effect is still controversial, decreased biodiversity has been shown to substantially affect the productivity of forest (Liang *et al.*, 2016) and herbaceous (Weisser *et al.*, 2017) ecosystems. For example, biodiversity loss can reduce the ability of an ecosystem to efficiently exploit its niches through the complementarity effect (Liang *et al.*, 2015), although the long-term effect remains uncertain (Cardinale *et al.*, 2012). Even highly managed monocultures may be less productive than natural ecosystems encompassing many species (Weisser *et al.*, 2017). Other results, however, show no or weak relationships between biodiversity and carbon storage (Adair *et al.*, 2018; Sullivan *et al.*, 2017). Second, biodiversity loss may reduce the resilience of species communities to climate change, in the sense that a reduced diversity of organisms is available to exploit new climatic conditions in their current location or to migrate to a new location (Miles *et al.*, 2010).

For the relationship between biodiversity loss and productivity, we use the relationship from Liang *et al.* (2016):

$$\log H(\Delta T, \Delta z) = \theta \log I(\Delta T, \Delta z), \quad (4)$$

who found  $\theta = 0.26$  (Liang *et al.*, 2016). This relationship is close to the empirical results also found by Hooper *et al.* (2012) and qualitatively similar to the classic relationship predicted by Naeem (2002). The initial slope ( $\partial H/\partial I = \theta = 0.26$  at  $I = 1$ ) is also similar to the linear productivity–functioning fits recently obtained by Morin *et al.* (2018), which are around a third of initial productivity over the full range of biodiversity loss. For the relationship between biodiversity loss and capacity to respond to climate change, we use the same biodiversity–function relationship  $H(\Delta T, \Delta z)$  as given by Eq. (4) in the absence of useful

empirical relationships. We caution that the biodiversity–function relationship will likely depend on both scale (Thompson *et al.*, 2018) and temperature (García *et al.*, 2018), factors that we do not include here due to a lack of data.

It remains to incorporate the effects of loss of ecosystem function into the carbon cycle model. In the model of Lade *et al.* (2018), the dynamics of terrestrial carbon is:

$$\frac{dc_t}{dt} = \frac{\text{NPP}_0}{c_{t0}} Q_R^{\Delta T/10} [K(c_a, \Delta T, \Delta z) - c_t] - \text{LUC}(t), \quad (5)$$

where  $\text{NPP}_0$  is pre-industrial terrestrial net primary productivity,  $Q_R$  specifies the temperature dependence of respiration from the terrestrial carbon pool (not including permafrost) and  $\text{LUC}(t)$  represents carbon emissions due to land-use change. We modify Lade *et al.*'s expression for terrestrial carbon carrying capacity  $K$  to include the effects of response lag and biodiversity loss introduced in Eqs (1–4), giving:

$$K(c_a, \Delta T, \Delta z) = H(\Delta T, \Delta z) \frac{1 + K_C \log \frac{c_a}{c_{a0}}}{Q_R^{\Delta T/10}} c_{t0} - K_A |\Delta T - \Delta z|,$$

From the original model,  $K_C$  specifies the strength of the response of NPP to  $\text{CO}_2$ , known as the  $\text{CO}_2$  fertilization effect, and  $c_{a0}$  is the pre-industrial atmospheric carbon stock. The new factor  $H(\Delta T, \Delta z)$  of the first term from Eq. (4) models the reduction of carbon storage capacity as a result of biodiversity loss, while the new final term  $K_A |\Delta T - \Delta z|$  from Eq. (2) models loss of carbon storage due to response lag.

### 2.1.3. Permafrost thaw

Using the observation that cumulative emissions from permafrost at 2100 under the RCP scenarios (Schneider von Deimling *et al.*, 2015) are approximately proportional to increases in global mean surface temperature by 2100 (Collins *et al.*, 2013), we model cumulative emission from permafrost with:

$$c_p = p_T \Delta[T]. \quad (7)$$

On the timescales of our model, permafrost thaw is effectively a one-way process: reduction of global mean temperature would not lead to emitted permafrost carbon being reabsorbed. We implement this ‘one-way valve’ through a temperature variable  $\Delta[T]$  that responds only to temperature increases:

$$\frac{d[\Delta T]}{dt} = \max\left(\frac{dT}{dt}, 0\right). \quad (8)$$

The dynamics of temperature  $T$  in the model are defined in Section 2.3. We set the initial value of  $\Delta[T]$  to 0. We classify permafrost thaw as a loss of biosphere integrity (Table 1b), since permafrost thaw may be considered a failure of tundra ecosystems to maintain their integrity in response to local climate changes (Schmidt *et al.*, 2011).

We estimated the value of  $p_T$  as follows: the IPCC AR5 gave an estimate of 50–250 PgC vulnerable to loss as both  $\text{CO}_2$  and  $\text{CH}_4$  by 2100 under the high-emissions RCP8.5 scenario (Ciais *et al.*, 2013), equivalent to 14–68 PgC/K. Since the publication of the AR5, there have been several pertinent studies regarding permafrost thawing (Koven *et al.*, 2015; Schaefer *et al.*, 2014; Schneider von Deimling *et al.*, 2015). A recent review (Steffen

*et al.*, 2018) summarized this literature with a figure of 45 PgC (uncertainty range 20–80 PgC) under 2°C warming; that is, a response of  $p_T = 22.5$  PgC/K (uncertainty range 10–40 PgC/K).

We caution that this linear approach to emissions from permafrost may be inaccurate for timescales longer than those considered in this study or for scenarios other than the RCP, since in our model emissions from permafrost are not limited by available permafrost carbon stocks. A more accurate and mechanistic treatment would involve explicit modelling of permafrost carbon stocks as well as rates of thawing and emission (Gasser *et al.*, 2018).

## 2.2. Ocean

The marine biosphere is also closely interlinked with the global carbon cycle. The marine biological pump, alongside the solubility pump, controls the marine carbon cycle. State-of-the-art global models predict that the biological pump may weaken by around 12% by 2100 under an RCP8.5 scenario, due mostly to increased stratification reducing nutrient delivery to the upper ocean and thereby decreasing primary production, although this prediction is uncertain (Bopp *et al.*, 2013). Ocean warming and acidification may additionally shift marine biodiversity towards smaller organisms that are less likely to transport carbon into the deep ocean (Beaugrand *et al.*, 2010; Riebesell *et al.*, 2017; Segschneider & Bendtsen, 2013). Here, we investigated changes to marine biosphere integrity as represented by biodiversity-mediated changes to the biological pump.

For marine carbon, the main change to the model of Lade *et al.* (2018) is to modify the representation of the marine biological pump (which includes the carbonate and soft-tissue pumps). To represent the additional effects of temperature on the biological pump via changes in marine biodiversity, we include an extra temperature-dependent term,  $B_{TB}\Delta T$ . For the effects of acidification, we let  $B_A$  be the effect of ocean acidification on the strength of the biological pump in units of fractional change relative to pre-industrial conditions per unit change in partial pressure of CO<sub>2</sub> in the upper ocean,  $p(c_m, \Delta T)$ . We then obtain the final expression for the strength of the biological pump:

$$B(\Delta T, p(c_m, \Delta T)) = B_0(1 - B_T\Delta T - B_{TB}\Delta T) \times (1 - B_A[p(c_m, \Delta T) - c_{a0}]). \quad (9)$$

We set  $B_A = 0.019\%/ \mu\text{atm}$  to match the experimental sedimentation rate results of Riebesell *et al.* (2017). We calibrated  $B_{TB} = 0.7\%/K$  to match predicted decreased atmosphere to ocean flux of 0.2 PgC/year by 2100 under RCP8.5 (Segschneider & Bendtsen, 2013).

The form for  $B$  in Eq. (9) can then be used in the existing equation of Lade *et al.* (2018) for the dissolved inorganic carbon content of the ocean mixed layer,  $c_m$ :

$$\frac{dc_m}{dt} = \frac{Dc_{m0}}{rp(c_{m0}, 0)}(c_a - p(c_m, \Delta T)) + B(0, c_{a0}) - B(\Delta T, p(c_m, \Delta T)) - w_0(1 - w_T\Delta T)(c_m - c_m(0)), \quad (10)$$

in which the partial pressure of CO<sub>2</sub> is given by:

$$p(c_m, \Delta T) = c_{a0} \left( \frac{c_m}{c_{m0}} \right)^r \frac{1}{1 - D_T\Delta T}. \quad (11)$$

Parameters carried over from Lade *et al.* (2018) are the rate at which the ocean mixed layer is replaced by the solubility pump,

$w_0$ ; the temperature sensitivity of the solubility pump,  $w_T$ ; the rate of atmosphere–ocean CO<sub>2</sub> diffusion,  $D$ ; the Revelle (buffer) factor for CO<sub>2</sub>,  $r$ ; the temperature sensitivity of CO<sub>2</sub> solubility,  $D_T$ ; the strength of the pre-industrial biological pump,  $B_0$ ; the temperature sensitivity of the biological pump,  $B_T$ ; and pre-industrial ocean mixed-layer carbon stock,  $c_{m0}$ . The parameter  $B_T$  represents non-biodiversity-related temperature effects on the biological pump as represented in conventional global models. In Lade *et al.* (2018),  $B_T$  was estimated from model results in which the biological pump weakens due to a decrease in primary production, in turn due to strengthening thermal stratification of ocean waters (Bopp *et al.*, 2013). Although recent research suggests that depth rather than strength of stratification may be more important for marine productivity (Richardson & Bendtsen, 2019), we retain the estimate of Lade *et al.* (2018) for consistency.

To calculate the total (surface plus deep) ocean carbon storage,  $c_m$ , any of several equivalent expressions can be used:

$$\begin{aligned} \Delta c_M &= \Delta c_m + \int^t w_0(1 - w_T\Delta T)(c_m - c_{m0})dt \\ &+ \int^t (B(\Delta T, p(c_m, \Delta T)) - B(0, c_{a0}))dt \\ &= \int^t D(c_{a0} - p(c_m, \Delta T))dt \\ &= \int^t e(t)dt - c_a - c_t + c_{a0} + c_{t0}, \end{aligned}$$

where  $e(t)$  is the rate of fossil fuel emissions of CO<sub>2</sub>.

## 2.3. Atmosphere

We calculate the atmospheric carbon content,  $c_a$ , by carbon conservation in our ‘system’ composed of carbon stocks in the ocean mixed layer, atmosphere and terrestrial biosphere. Our model has three processes that affect this ‘system carbon’: emissions of fossil carbon into the atmosphere,  $e(t)$ ; export of carbon into the deep ocean by the solubility and biological pumps; and emissions from permafrost carbon. Equation (7) gives cumulative emissions from permafrost, while the other two processes are parameterized in terms of rates. We therefore write:

$$c_a + c_t + c_m = c_{a0} + c_{t0} + c_{m0} + c_s + c_p, \quad (12)$$

where  $c_s$  is the change in ‘system carbon’ contributed by fossil fuel emissions and the biological pump. To calculate  $c_s$ , we solve:

$$\begin{aligned} \frac{dc_s}{dt} &= e(t) - w_0(1 - w_T\Delta T)(c_m - c_{m0}) \\ &- (B(\Delta T, p(c_m, \Delta T)) - B(0, c_{a0})), \end{aligned}$$

with initial condition  $c_s = 0$ .

To obtain the dynamics of atmosphere carbon stocks, we therefore solve Eq. (13) and then use the carbon balance equation Eq. (12) to find  $c_a$ .

The expression for the response of global mean surface temperature  $T$  to atmospheric carbon content  $c_a$  is also unchanged:

$$\frac{dT}{dt} = \frac{1}{\tau} \left( \frac{\lambda}{\log 2} \log \left( \frac{c_a}{c_{a0}} \right) - \Delta T \right). \quad (14)$$

Parameters carried over from Lade *et al.* are the climate sensitivity (specifically, transient climate response),  $\lambda$ , and the climate lag,  $\tau$ .

**Table 3.** Model simulations run for feedback analysis. The feedback ‘off’ model for c.ii is the feedback ‘on’ model for a.i since c.ii modifies the response lag introduced in a.i.

Feedback	Feedback ‘off’ model	Feedback ‘on’ model
<i>(a) Feedbacks from model of Lade et al. (2018)</i>		
Land climate–carbon	Fully uncoupled	Lade <i>et al.</i> with ocean uncoupled and $K_C$ , $LUC(t) = 0$
Ocean climate–carbon	Fully uncoupled	Lade <i>et al.</i> with land uncoupled and ocean $CO_2$ uncoupled
Land concentration–carbon	Fully uncoupled	Lade <i>et al.</i> with $\lambda = 0$ and ocean uncoupled
Ocean concentration–carbon	Fully uncoupled	Lade <i>et al.</i> with $\lambda = 0$ and land uncoupled
Total land	Fully uncoupled	Lade <i>et al.</i> with ocean uncoupled
Total ocean	Fully uncoupled	Lade <i>et al.</i> with land uncoupled
<i>(b) New feedbacks in this model</i>		
Response lag (a.i)	Lade <i>et al.</i> with ocean decoupled	Full model with ocean uncoupled, $Q_p = 1$ , and $H = 1$ in Eqs (1) and (6)
Permafrost thaw (b.i)	Lade <i>et al.</i> with ocean decoupled	Full model with ocean uncoupled, $K_A = 0$ , and $H = 1$ in Eqs (1) and (6)
Biodiversity–productivity effect (c.i)	Lade <i>et al.</i> with ocean uncoupled	Full model with ocean uncoupled, large values for $r_g$ and $v_{max}$ , $Q_p = 1$ , and $H = 1$ in Eq. (1)
Biodiversity–resilience effect (c.ii)	(a.i) feedback ‘on’	Full model with ocean uncoupled, $Q_p = 1$ , and $H = 1$ in Eq. (6)
Marine biological pump temperature effect (d.i)	Lade <i>et al.</i> with land uncoupled	Full model with land uncoupled and $B_A = 0$
Marine biological pump acidification effect (d.ii)	Lade <i>et al.</i> with land uncoupled	Full model with land uncoupled and $B_{TB} = 0$
Total biosphere integrity feedbacks	Lade <i>et al.</i>	Full model

#### 2.4. Feedback analysis

For many of the biosphere integrity mechanisms introduced above, it is controversial as to whether a mechanism that only has theoretical motivation or only has been observed at small scales actually has a significant impact on the global carbon cycle. Parameterizations of these mechanisms are also often highly unconstrained. We therefore test the potential impacts of each mechanism in turn and one scenario of their potential combined effect where all mechanisms are active.

For each mechanism, we perform one reference simulation with the mechanism ‘switched off’ and then one simulation with the mechanism ‘switched on’. These switches are achieved by changing parameter values to activate and deactivate different mechanisms as listed in Table 3. We include in our analysis the conventional climate–carbon and concentration–carbon feedbacks (Friedlingstein *et al.*, 2001, 2006; Gregory *et al.*, 2009; Zickfeld *et al.*, 2011) analysed by Lade *et al.* (2018), as well as each biosphere integrity mechanism introduced in this paper and one final feedback analysis where all biosphere integrity mechanisms are switched on. To avoid as much as possible the effects of interacting feedbacks, the reference (‘feedback off’) simulations for the biosphere integrity mechanisms have the ocean decoupled when studying land mechanisms and vice versa. We introduce the following definitions for simulation runs that are listed in Table 3:

- Land uncoupled:  $c_t$  is held constant, which can be achieved by setting  $K_C$ ,  $LUC(t) = 0$  and  $Q_R = 1$  in the Lade *et al.* model and additionally  $I_{CC}$ ,  $I_d = 0$  and  $Q_P = 1$  in the full model.

- Ocean  $CO_2$  uncoupled: changes in atmospheric carbon concentration do not affect ocean carbon, which can be achieved by replacing  $c_a$  with  $c_{a0}$  in Eq. (10).
- Ocean uncoupled:  $c_m$  is held constant, which can be achieved by ‘Ocean  $CO_2$  uncoupled’ above together with  $w_T$ ,  $D_T$ ,  $B_T = 0$  in the Lade *et al.* model and additionally  $B_A$ ,  $B_{TB} = 0$  in the full model.
- Fully uncoupled: both  $c_t$  and  $c_m$  are held constant, which can be achieved in the model by using parameters from both ‘Land uncoupled’ and ‘Ocean uncoupled’.

As in Lade *et al.* (2018), changes in  $\Delta c_a$  and  $\Delta T$  are estimated over simulation runs from 1750 to 2100. The model is driven by: historical records and future RCP scenarios (RCP2.6, 4.5, 6 and 8.5) for fossil fuel emissions  $e(t)$  and land-use change emissions  $LUC(t)$  (Meinshausen *et al.*, 2011a) taken from the RCP Database (<https://tntcat.iiasa.ac.at/RcpDb>); and the scenarios for direct human impacts on biodiversity  $I_d(t)$  described above and in Table 2. Parameters are as listed in Table 2 except when modified as per individual simulations as listed in Table 3. We note that the model variants studied here are unlikely to match observed historical carbon cycle dynamics as closely as the base model from Lade *et al.* (2018). Recalibrating the model for each run would, however, make assessing the additional warming contributed by each new biosphere integrity mechanism more difficult. We therefore retain Lade *et al.*’s parameterization throughout.

From the results of these simulations, we estimated three measures for the strength of the mechanisms: (1) the feedback factor



(Zickfeld *et al.*, 2011):

$$\frac{\Delta c_a^{\text{on}}}{\Delta c_a^{\text{off}}}; \quad (15)$$

(2) the additional atmospheric carbon contributed by the mechanism:

$$\Delta c_a^{\text{on}} - \Delta c_a^{\text{off}}; \quad (16)$$

and (3) the additional warming contributed by the mechanism:

$$\Delta T^{\text{on}} - \Delta T^{\text{off}}, \quad (17)$$

where the superscripts ‘on’ and ‘off’ denote changes with the mechanism active compared to the reference run with the mechanism off. For the feedback factor calculations in Eq. (15), we additionally set biodiversity loss from direct human action  $I_d = 0$  and land-use change emissions  $LUC(t) = 0$ , since these represent external drivers and not internal climate–carbon feedbacks triggered by fossil fuel emissions.

### 2.5. Uncertainty analysis

Some parameters ( $K_A$ ,  $Q_p$ ) are sufficiently well constrained that we could estimate plausible upper and lower bounds for those parameters. For other parameters ( $\theta$ ,  $I_{CC}$ ,  $B_A$ ,  $B_{TB}$ ), we assigned naïve lower and upper bounds of zero and twice the central parameter estimate, respectively. For multiplicative parameters where a value of zero would have led to model output that did not change over time ( $r_g$ ,  $v_{\text{max}}$ ), we assigned lower and upper bounds of half and twice the central parameter estimate, respectively. These lower and upper bounds are shown in square brackets in Table 2. We did not estimate uncertainty ranges for the parameters inherited from the model of Lade *et al.* (2018) without biosphere integrity mechanisms since (1) uncertainty ranges were not estimated in that study and (2) the purpose of the present study is to estimate the additional feedbacks and warming contributed by biosphere integrity mechanisms, using Lade *et al.* as a baseline.

We assigned uniform probability distributions to these parameters with the central ‘best estimate’ as the median; that is:

$$P(x) = \begin{cases} \frac{0.5}{c-l}, & l < x < c \\ \frac{0.5}{u-c}, & c < x < u \\ 0, & \text{otherwise} \end{cases}$$

where  $l$ ,  $c$  and  $u$  are the lower bound, central ‘best estimate’ and upper bound of the parameter, respectively. For model runs studying individual biosphere integrity mechanisms, this leads to approximately uniform distributions of the output variable. We therefore plot these results using a bar to indicate the uncertainty range and a marker to indicate the output using the central ‘best estimate’ parameter values. Model runs studying possible total biosphere integrity effects produce a less trivial distribution of the output variable, since this model convolves the uniform distributions of multiple parameters. We present the distributions of the output variables for these models using box-and-whisker plots.

We also performed a sensitivity analysis to test the dependence of the model’s results on the parameters of the model. We chose

the total additional warming contributed by all biosphere integrity mechanisms under RCP8.5 as a representative result on which to test sensitivity.

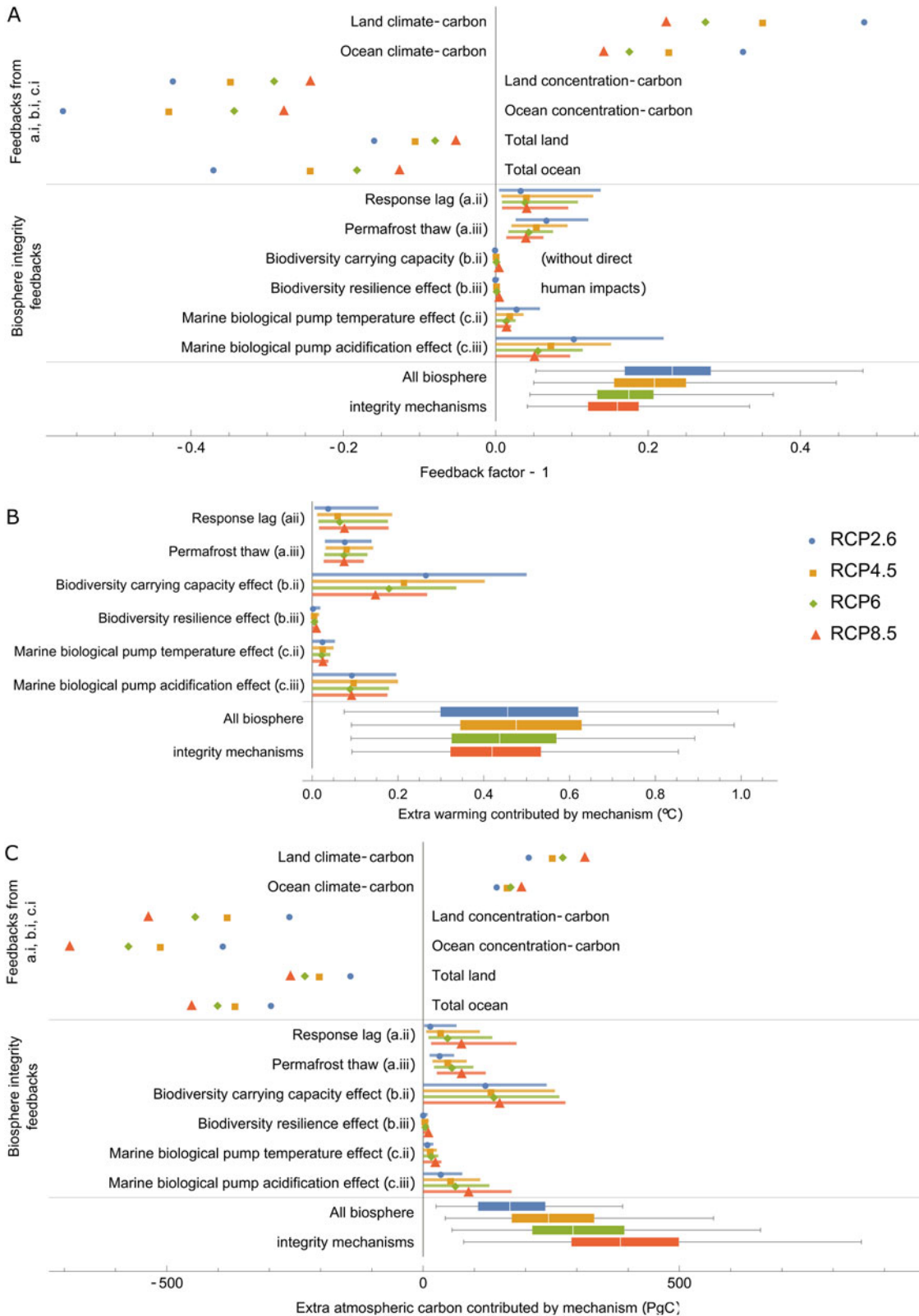
### 3. Results

Using each of the three feedback metrics listed in Eqs (15), (16) and (17), Figure 2 measures: the generic climate–carbon cycle feedbacks analysed by Lade *et al.* (2018) in their baseline model; each new biosphere integrity mechanism introduced in this article; and the total effect of the new biosphere integrity mechanisms. (We did not, however, measure the extra warming contributed by the baseline climate–carbon feedbacks since measuring some of these feedbacks involves disconnecting the climate part of the model.)

We caution that the uncertainty ranges associated with the biosphere integrity mechanisms, however, are very large. Permafrost thaw was the only mechanism for which there was empirical support for a non-zero effect. All other mechanisms could have anywhere between zero effect to feedbacks that contributed warming up to several tenths of a degree (Figure 2B). The following results should therefore be treated as well-informed speculation. Quantitative results listed in the text refer to the central ‘best estimates’ produced by our model (see Section 2.5), but for many mechanisms there is substantial uncertainty over whether the mechanism operates at all, let alone its magnitude.

The feedbacks measured in the baseline model (top part of Figure 2A) reproduce the results found in Lade *et al.* (2018). Land and ocean climate–carbon feedbacks (where a change in climate causes a change in land or ocean carbon stocks, respectively, which causes a change in atmospheric carbon and thereby climate) were both positive. In the model, these positive feedbacks occur due to the dependence of terrestrial respiration rates, the marine solubility pump, marine biological pump and ocean CO<sub>2</sub> solubility on temperature (Lade *et al.*, 2018). Land and ocean concentration–carbon feedbacks (where a change in atmospheric carbon causes a change in land or ocean carbon stocks, respectively, which causes a change in atmospheric carbon) were both negative (Figure 2A). In the model, these negative feedbacks occur due to the dependence of terrestrial productivity on CO<sub>2</sub> concentration and the diffusion of atmospheric CO<sub>2</sub> into the ocean (Lade *et al.*, 2018). Both land and ocean climate–carbon cycle feedbacks (combining both climate–carbon and concentration–carbon feedbacks) were negative overall, although they were weakest for the extreme RCP8.5 scenario.

All feedback metrics are positive for the new biosphere integrity mechanisms, as expected; that is, they all could contribute additional climate–carbon cycle feedbacks that lead to additional atmospheric carbon stocks and additional climate warming (Figure 2). The biodiversity–productivity effect (c.i) – that is, biodiversity loss leading to reduced productivity and thereby reduced carbon storage – was the strongest mechanism in the warming (Figure 2B) and atmospheric carbon (Figure 2C) metrics according to their central ‘best estimates’. When calculating the feedback factor metric (Figure 2A), we switched off the direct human impacts on biodiversity ( $I_d(t)$ ) since this impact constitutes a driver and not a feedback within the model. This significantly reduced the strength of the biodiversity–productivity effect, indicating that direct human impacts dominate over climate-mediated impacts in the model. The next three largest mechanisms, according to their central estimates, were response lag (a.i), permafrost thaw (b.i) and the marine biological pump acidification effect (d.ii).



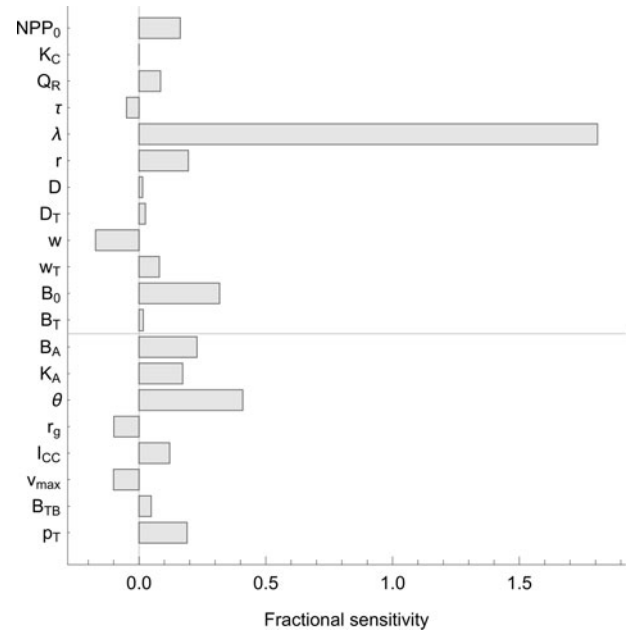
**Fig. 2.** Results of the climate-carbon cycle-biosphere integrity model. (A) Feedbacks reported by Lade *et al.* (2018) without biosphere integrity feedbacks (top); biosphere integrity feedbacks new to this paper (middle); and total biosphere integrity feedbacks assuming all biosphere integrity mechanisms are active. We plot the feedback factor minus one so that positive numbers correspond to positive (reinforcing) feedbacks and negative numbers correspond to negative (balancing) feedbacks. In this plot, we also set direct biodiversity losses and land-use change emissions to zero ( $I_d(t) = 0$  and  $LUC(t) = 0$ ) so that only endogenous carbon cycle feedbacks to atmospheric carbon changes triggered by fossil fuel emissions are included. (B) Additional warming and (C) additional atmospheric carbon dioxide contributed by losses of biosphere integrity. Labels for different biosphere integrity mechanisms (a.i, b.i, etc.) refer to the list in Table 1.

The biodiversity–resilience effect (c.ii) was the weakest of the biosphere integrity mechanisms considered here. We speculate that the biodiversity–resilience effect is small because it is a ‘second-order mechanism’, in that it requires both a substantial lag between climate and ecosystem response ( $\Delta T - \Delta z$ ) and a sufficient biodiversity-mediated increase in response lag ( $H(\Delta T, \Delta z)$ ) to have developed (see Eq. 1). While a longer simulation may allow these factors to develop, preliminary results indicate that the effect remains small compared to other mechanisms, even on longer timescales. We note, however, that our assumptions for biodiversity loss are also relatively conservative, excluding any explicit biodiversity tipping points or similar mechanisms.

Of the four categories of biosphere integrity mechanisms, the marine effects (d.i and d.ii) were smallest. Their combined effects, which reached central estimates of approximately  $0.1^\circ\text{C}$  under all scenarios (Figure 2B), are significant compared to a  $1.5^\circ\text{C}$  global goal, but less than from the biosphere integrity mechanisms in the terrestrial biosphere. The 100-year timescale considered here, however, is relatively short for ocean dynamics. On long timescales, the marine biosphere may be the critical factor constraining atmospheric carbon dioxide levels (Sigman & Boyle, 2000).

Mirroring the baseline model results, the feedback factors for the biosphere integrity mechanisms were generally the same or slightly smaller for the more extreme RCP scenarios. The extra atmospheric carbon contributed by each mechanism was, however, generally larger for the more extreme RCP scenarios. Feedback factors are the ratio between changes in atmospheric carbon with the mechanism active and inactive. That the extra atmospheric carbon contributed increased with the RCP scenario indicates, therefore, that the reduction in amplification associated with a reduced feedback factor did not outweigh the increase in atmospheric carbon content associated with the greater fossil fuel emissions of the more extreme RCP scenarios. Remarkably, the maximum additional warming (Figure 2B) is roughly the same across the four RCP emissions scenarios. Feedbacks in high-emissions scenarios release more carbon into the atmosphere than in low-emissions scenarios (Figure 2C), but this is balanced by the lower marginal sensitivity of temperature to atmospheric carbon at high atmospheric carbon levels (Myhre *et al.*, 1998). That temperature is less sensitive to atmospheric carbon under large carbon emissions, however, does not make mitigating climate change easier; in fact, at high atmospheric carbon levels, greater reductions of carbon emissions will be required to mitigate the same magnitude of warming.

None of the individual biosphere integrity mechanisms are likely to outweigh existing climate–carbon cycle feedbacks and turn the land or ocean into net carbon sources. However, lags in ecosystem response and permafrost thaw could together halve the total land carbon feedback, according to their central estimates (Figure 2A). The combined effects of these feedbacks could generate a positive carbon-cycle feedback, leading to up to an additional  $0.1^\circ\text{C}$  or more of warming (Figure 2B), according to their central estimates under all RCP scenarios. About half of this additional warming was due to carbon releases from warming and thawing permafrost soils and half was due to range shifts. The direct impact of biodiversity loss on terrestrial primary production (Table 1c.i) could contribute a warming exceeding  $0.2^\circ\text{C}$  (Figure 2B), according to its central estimate under all RCP scenarios, and also contribute an additional positive feedback that, if all terrestrial biosphere integrity mechanisms considered here are active, could exceed the baseline terrestrial carbon sink under all emissions scenarios (compare ‘Total land’ above the



**Fig. 3.** Sensitivity analysis. Sensitivity of the central estimate of the total additional warming contributed by all biosphere integrity mechanisms under RCP8.5 (Figure 2B, bottom line) to all model parameters. Sensitivity was computed by increasing and decreasing each parameter in turn by 10% above and below its nominal value. Fractional sensitivity is reported; that is, a value of  $x$  indicates that a change in the parameter of  $y\%$  will cause a change in the total warming by  $xy\%$  (in the local linear approximation). Parameters above the line indicate those inherited from the baseline model of Lade *et al.* (2018); parameters below the line indicate new parameters.

line with all terrestrial biodiversity integrity mechanisms in Figure 2C).

The net additional warming of all biosphere integrity mechanisms considered here could exceed  $0.4^\circ\text{C}$  (Figure 2B, bottom line), according to their central estimates under all RCP scenarios. This may seem to be a relatively small amount, but it is substantial compared to a  $1.5$  or  $2.0^\circ\text{C}$  target. For example, given a median transient climate response to cumulative emissions of  $1.29^\circ\text{C}$  per 1000 GtC (Millar *et al.*, 2017),  $0.4^\circ\text{C}$  corresponds to a substantial reduction in allowable cumulative emissions of around 310 GtC independently of the temperature target itself.

The sensitivity analysis (Figure 3) shows that the total additional warming is most sensitive to  $\lambda$ , which is not surprising, as  $\lambda$  controls the sensitivity of temperature change to atmospheric carbon dioxide levels. Of the other parameters, none stands out as exceptionally significant. Of the parameters related to the biosphere integrity mechanisms, total additional warming is most sensitive to  $\theta$ , which controls the shape of the biodiversity–function relationship.

#### 4. Discussion

We used a stylized global carbon cycle model to study four classes of interactions between biosphere integrity and climate: response lags, permafrost thaw, terrestrial biodiversity loss and changes in marine biodiversity that affect the marine biological pump (Table 1). We found that response lags, permafrost thaw and terrestrial vegetation biodiversity loss could significantly undermine mitigation efforts to reduce fossil fuels emissions. If all of these mechanisms are active, they could lead to land becoming a net carbon source by 2100, according to their central estimates.

Marine biosphere integrity mechanisms were the weakest of the four classes of interactions considered here, although this result may be due to the short timescales considered here, as the marine biosphere may be the critical factor constraining atmospheric carbon dioxide levels in the long term (Sigman & Boyle, 2000). Many of the biosphere integrity mechanisms studied here are, however, highly unconstrained, and the results should be treated as highly speculative.

Our work points to several arenas of research and policy that could support better understanding and policy-making regarding the interplay between biosphere integrity and climate change. In global modelling, our results suggest that a deeper integration of sophisticated models of the biosphere, incorporating biodiversity, permafrost dynamics and complex ecosystem structure, may be essential for meaningful future assessments of anthropogenic climate change. Such next-generation global biosphere models are becoming available (Purves *et al.*, 2013), but they are not yet coupled to other relevant parts of the Earth system. Our work highlights the need for further research on biodiversity and ecosystem functioning, including how the interplay between range shift speeds, local trait diversity and ecosystem functioning (Isbell *et al.*, 2017; Pecl *et al.*, 2017; Wiczyński *et al.*, 2019) can lead to an integrated understanding of biosphere response capacity in relation to climate change (Enquist *et al.*, 2015). In the ocean, while it is traditionally assumed that heavily ballasted phytoplankton are responsible for the majority of carbon transfer via the biological pump, future climate-mediated changes to marine biota may lead to other organisms dominating carbon transfer (Segsneider & Bendtsen, 2013).

The interactions and feedbacks between biosphere integrity and climate imply that current global governance of biodiversity and climate change also needs to interact in new ways. The world's societies have acknowledged the importance of the climate and biosphere individually through the United Nations Framework Convention on Climate Change and the Convention of Biological Diversity. To inform these policy processes, scientific advisory bodies have been established: the IPCC and the Intergovernmental Platform on Biodiversity and Ecosystem Services (IPBES). The IPCC's projections of impacts of human activities on climate are based on coupled ocean–atmosphere models of carbon and energy flows that take limited account of the role of biological diversity. IPBES, on the other hand, is currently focused on species, their distributions and their direct benefits to societies; attention to ecosystem functioning and Earth system dynamics is less prominent. The divergent policy priorities of IPCC and IPBES and the use of such disparate currencies as CO<sub>2</sub>-equivalents and species in their respective science communities and modelling tools preclude the serious exploration of the potential interactions of climate change with the biologically controlled stocks and flows in the global carbon cycle. We call for the work of bodies such as the IPCC and IPBES to be better integrated.

Here, we have undertaken one of the first studies of planetary boundary interactions. The planetary boundary framework has been popular in some sectors of government and business, but the boundaries are conventionally presented as not interacting. We extended a previous stylized carbon cycle model to study the potential feedbacks between the climate change and biosphere integrity planetary boundaries. In addition to climate change causing loss of biosphere integrity, we analysed several mechanisms by which loss of biosphere integrity could accelerate climate change and lead to a significant feedback between climate change

and loss of biosphere integrity. Analysing and synthesizing interactions between the planetary boundaries may assist policy-makers in recognizing the importance of interactions between climate change, biosphere integrity and other environmental policy challenges.

**Acknowledgements.** None.

**Author contributions.** SJL, JN, JMA, SEC, JFD, IF, KR, JR and WS designed the research. SJL, JN, TG, CB and WS constructed the model. SJL analysed the model. All authors wrote the paper.

**Financial support.** The research leading to these results has received funding from the Stordalen Foundation via the Planetary Boundary Research Network (PB.net), the Earth League's EarthDoc programme, the Leibniz Association (project DOMINOES), European Research Council Synergy project Imbalance-P (grant ERC-2013-SyG-610028), European Research Council Advanced Investigator project ERA (grant ERC-2016-ADG-743080), Deutsche Forschungsgemeinschaft (DFG BE 6485/1-1), Project Grant 2014-589 from the Swedish Research Council Formas and a core grant to the Stockholm Resilience Centre by Mistra.

**Conflicts of interest.** None.

**Ethical standards.** This research and article complies with *Global Sustainability's* publishing ethics guidelines.

## References

- Adair, E. C., Hooper, D. U., Paquette, A., & Hungate, B. A. (2018). Ecosystem context illuminates conflicting roles of plant diversity in carbon storage. *Ecology Letters*, 21(11), 1604–1619.
- Ahlström, A., Xia, J., Arneeth, A., Luo, Y., & Smith, B. (2015). Importance of vegetation dynamics for future terrestrial carbon cycling. *Environmental Research Letters*, 10(5), 054019.
- Anderies, J. M., Carpenter, S., Steffen, W., & Rockström, J. (2013). The topology of non-linear global carbon dynamics: From tipping points to planetary boundaries. *Environmental Research Letters*, 8(4), 044048.
- Arora, V. K., Boer, G. J., Friedlingstein, P., Eby, M., Jones, C. D., Christian, J. R., ... Wu, T. (2013). Carbon-concentration and carbon-climate feedbacks in CMIP5 Earth system models. *Journal of Climate*, 26(15), 5289–5314.
- Ash, J. D., Givnish, T. J., & Waller, D. M. (2016). Tracking lags in historical plant species' shifts in relation to regional climate change. *Global Change Biology*, 23(3), 1305–1315.
- Beaugrand, G., Edwards, M., & Legendre, L. (2010). Marine biodiversity, ecosystem functioning, and carbon cycles. *Proceedings of the National Academy of Sciences of the United States of America*, 107(22), 10120–10124.
- Bellard, C., Bertelsmeier, C., Leadley, P., Thuiller, W., & Courchamp, F. (2012). Impacts of climate change on the future of biodiversity. *Ecology Letters*, 15(4), 365–377.
- Bertrand, R., Lenoir, J., Piedallu, C., Riofrío-Dillon, G., De Ruffray, P., Vidal, C., ... Gégout, J.-C. (2011). Changes in plant community composition lag behind climate warming in lowland forests. *Nature*, 479(7374), 517–520.
- Bopp, L., Resplandy, L., Orr, J. C., Doney, S. C., Dunne, J. P., Gehlen, M., ... Vichi, M. (2013). Multiple stressors of ocean ecosystems in the 21st century: projections with CMIP5 models. *Biogeosciences*, 10, 6225–6245.
- Burke, E. J., Chadburn, S. E., & Ekici, A. (2017). A vertical representation of soil carbon in the JULES land surface scheme (vn4.3 permafrost) with a focus on permafrost regions. *Geoscientific Model Development*, 10(2), 959–975.
- Cardinale, B. J., Duffy, J. E., Gonzalez, A., Hooper, D. U., Perrings, C., Venail, P., ... Naeem, S. (2012). Biodiversity loss and its impact on humanity. *Nature*, 486(7401), 59–67.
- Castro-Izaguirre, N., Chi, X., Baruffolo, M., Tang, Z., Ma, K., Schmid, B., & Niklaus, P. A. (2016). Tree diversity enhances stand carbon storage but not leaf area in a subtropical forest. *PloS One*, 11(12), e0167771.
- Chadburn, S. E., Burke, E., Cox, P., Friedlingstein, P., Hugelius, G., & Westermann, S. (2017). An observation-based constraint on permafrost loss as a function of global warming. *Nature Climate Change*, 7(5), 340–344.

- Chapin, F. S., Randerson, J. T., McGuire, A. D., Foley, J. A., & Field, C. B. (2008). Changing feedbacks in the climate–biosphere system. *Frontiers in Ecology and the Environment*, 6(6), 313–320.
- Ciais, P., Sabine, C., Bala, G., Bopp, L., Brovkin, V., Canadell, J., ... Thornton, P. (2013). Carbon and other biogeochemical cycles. In T. Stocker, D. Qin, G.-K. Plattner, M. Tignor, S. K. Allen, J. Boschung, ... P. M. Midgley (Eds.), *Climate Change 2013: The Physical Science Basis. Contribution of Working Group I to the Fifth Assessment Report of the Intergovernmental Panel on Climate Change* (pp. 465–570). Cambridge University Press.
- Collins, M., Knutti, R., Arblaster, J., Dufresne, J.-L., Fichet, T., Friedlingstein, P., ... Wehner, M. (2013). Long-term climate change: projections, commitments and irreversibility. In T. Stocker, D. Qin, G.-K. Plattner, M. Tignor, S. K. Allen, J. Boschung, ... P. M. Midgley (Eds.), *Climate Change 2013: The Physical Science Basis. Contribution of Working Group I to the Fifth Assessment Report of the Intergovernmental Panel on Climate Change* (pp. 1029–1136). Cambridge University Press.
- Davis, M. B., & Shaw, R. G. (2001). Range shifts and adaptive responses to quaternary climate change. *Science*, 292(5517), 673–679.
- Diaz, S., & Cabido, M. (2001). Vive la difference: plant functional diversity matters to ecosystem processes. *Trends in Ecology & Evolution*, 16(11), 646–655.
- Diaz, S., Wardle, D. A., & Hector, A. (2009). Incorporating biodiversity in climate change mitigation initiatives. In S. Naem, D. E. Bunker, A. Hector, M. Loreau, & C. Perring (Eds.), *Biodiversity, Ecosystem Functioning, and Human Wellbeing – An Ecological and Economic Perspective*. Oxford University Press.
- Dorren, L. K., Berger, F., Imeson, A. C., Maier, B., & Rey, F. (2004). Integrity, stability and management of protection forests in the European alps. *Forest Ecology and Management*, 195(1–2), 165–176.
- Ekici, A., Beer, C., Hagemann, S., Boike, J., Langer, M., & Hauck, C. (2014). Simulating high-latitude permafrost regions by the JSBACH terrestrial ecosystem model. *Geoscientific Model Development*, 7(2), 631–647.
- Enquist, B. J., Norberg, J., Bonser, S. P., Violle, C., Webb, C. T., Henderson, A., ... Savage, V. M. (2015). Scaling from traits to ecosystems: developing a general trait driver theory via integrating trait-based and metabolic scaling theories. *Advances in Ecological Research*, 52, 249–318.
- Essl, F., Dullinger, S., Rabitsch, W., Hulme, P. E., Pyšek, P., Wilson, J. R., & Richardson, D. M. (2015). Delayed biodiversity change: no time to waste. *Trends in Ecology & Evolution*, 30(7), 375–378.
- Folke, C., Carpenter, S., Walker, B., Scheffer, M., Elmqvist, T., Gunderson, L., & Holling, C. S. (2004). Regime shifts, resilience, and biodiversity in ecosystem management. *Annual Review of Ecology, Evolution, and Systematics*, 35, 557–581.
- Friedlingstein, P., Bopp, L., Ciais, P., Dufresne, J.-L., Fairhead, L., LeTreut, H., ... Orr, J. (2001). Positive feedback between future climate change and the carbon cycle. *Geophysical Research Letters*, 28(8), 1543–1546.
- Friedlingstein, P., Cox, P., Betts, R., Bopp, L., Von Bloh, W., Brovkin, V., ... Zeng, N. (2006). Climate–carbon cycle feedback analysis: results from the C4MIP model intercomparison. *Journal of Climate*, 19(14), 3337–3353.
- Gaffney, O., & Steffen, W. (2017). The Anthropocene equation. *The Anthropocene Review*, 4, 53–61.
- García, F. C., Bestion, E., Warfield, R., & Yvon-Durocher, G. (2018). Changes in temperature alter the relationship between biodiversity and ecosystem functioning. *Proceedings of the National Academy of Sciences of the United States of America*, 115(43), 10989–10994.
- Gasser, T., Ciais, P., Boucher, O., Quilcaille, Y., Tortora, M., Bopp, L., & Hauglustaine, D. (2017). The compact earth system model OSCAR v2.2: description and first results. *Geoscientific Model Development*, 10(1), 271–319.
- Gasser, T., Kechiar, M., Ciais, P., Burke, E., Kleinen, T., Zhu, D., ... Obersteiner, M. (2018). Path-dependent reductions in CO<sub>2</sub> emission budgets caused by permafrost carbon release. *Nature Geoscience*, 11(11), 830–835.
- Gregory, J. M., Jones, C., Cadule, P., & Friedlingstein, P. (2009). Quantifying carbon cycle feedbacks. *Journal of Climate*, 22(19), 5232–5250.
- Guimberteau, M., Zhu, D., Maignan, F., Huang, Y., Chao, Y., Dantec-Nédélec, S., ... Ciais, P. (2018). ORCHIDEE-MICT (v8.4.1), a land surface model for the high latitudes: model description and validation. *Geoscientific Model Development*, 11(1), 121–163.
- Hagemann, S., Blome, T., Ekici, A., & Beer, C. (2016). Soil-frost-enabled soil–moisture–precipitation feedback over northern high latitudes. *Earth System Dynamics*, 7(3), 611–625.
- Hautier, Y., Tilman, D., Isbell, F., Seabloom, E. W., Borer, E. T., & Reich, P. B. (2015). Anthropogenic environmental changes affect ecosystem stability via biodiversity. *Science*, 348(6232), 336–340.
- Hooper, D. U., Adair, E. C., Cardinale, B. J., Byrnes, J. E., Hungate, B. A., Matulich, K. L., ... O'Connor, M. I. (2012). A global synthesis reveals biodiversity loss as a major driver of ecosystem change. *Nature*, 486(7401), 105–108.
- House, J., Brovkin, V., Betts, R., Constanza, B., Assunção, M., Dias, S., ... Nishioka, S. (2005). Climate and air quality. In R. Hassan, R. Scholes, & N. Ash (Eds.), *Ecosystems and Human Well-Being: Current State and Trends* (pp. 355–390). Island Press.
- Hurtt, G. C., Chini, L. P., Frolking, S., Betts, R., Feddema, J., Fischer, G., ... Wang, Y. P. (2011). Harmonization of land-use scenarios for the period 1500–2100: 600 years of global gridded annual land-use transitions, wood harvest, and resulting secondary lands. *Climatic Change*, 109(1–2), 117.
- Isbell, F., Craven, D., Connolly, J., Loreau, M., Schmid, B., Beierkuhnlein, C., ... Eisenhauer, N. (2015). Biodiversity increases the resistance of ecosystem productivity to climate extremes. *Nature*, 526(7574), 574–577.
- Isbell, F., Gonzalez, A., Loreau, M., Cowles, J., Diaz, S., Hector, A., ... Larigauderie, A. (2017). Linking the influence and dependence of people on biodiversity across scales. *Nature*, 546(7656), 65–72.
- Joos, F., Bruno, M., Fink, R., Siegenthaler, U., Stocker, T. F., Le Quere, C., & Sarmiento, J. L. (1996). An efficient and accurate representation of complex oceanic and biospheric models of anthropogenic carbon uptake. *Tellus B*, 48(3), 397–417.
- Karr, J. R. (1990). Biological integrity and the goal of environmental legislation: lessons for conservation biology. *Conservation Biology*, 4(3), 244–250.
- Koven, C. D., Schuur, E., Schädel, C., Bohn, T., Burke, E., Chen, G., ... Turetsky, M. (2015). A simplified, data-constrained approach to estimate the permafrost carbon–climate feedback. *Philosophical Transactions. Series A. Mathematical, Physical, and Engineering Sciences*, 373(2054), 20140423.
- Lade, S. J., Donges, J. F., Fetzer, I., Anderies, J. M., Beer, C., Cornell, S. E., ... Steffen, W. (2018). Analytically tractable climate-carbon cycle feedbacks under 21st century anthropogenic forcing. *Earth System Dynamics*, 9, 507–523.
- Lawrence, D. M., Koven, C., Swenson, S. C., Riley, W., & Slater, A. (2015). Permafrost thaw and resulting soil moisture changes regulate projected high-latitude CO<sub>2</sub> and CH<sub>4</sub> emissions. *Environmental Research Letters*, 10(9), 094011.
- Lenton, T., Schellnhuber, H., & Szathmáry, E. (2004). Climbing the co-evolution ladder. *Nature*, 431(7011), 913–913.
- Liang, J., Crowther, T. W., Picard, N., Wiser, S., Zhou, M., Alberti, G., ... Reich, P. B. (2016). Positive biodiversity–productivity relationship predominant in global forests. *Science*, 354(6309), aaf8957.
- Liang, J., Zhou, M., Tobin, P. C., McGuire, A. D., & Reich, P. B. (2015). Biodiversity influences plant productivity through niche–efficiency. *Proceedings of the National Academy of Sciences of the United States of America*, 112(18), 5738–5743.
- Loarie, S. R., Duffy, P. B., Hamilton, H., Asner, G. P., Field, C. B., & Ackerly, D. D. (2009). The velocity of climate change. *Nature*, 462(7276), 1052–1055.
- MacDougall, A. H., Zickfeld, K., Knutti, R., & Matthews, H. D. (2015). Sensitivity of carbon budgets to permafrost carbon feedbacks and non-CO<sub>2</sub> forcings. *Environmental Research Letters*, 10(12), 125003.
- Mace, G. M., Meyers, B., Alkemade, R., Biggs, R., Chapin, F. S., Cornell, S. E., ... Woodward, G. (2014). Approaches to defining a planetary boundary for biodiversity. *Global Environmental Change*, 28, 289–297.
- Meinshausen, M., Smith, S. J., Calvin, K., Daniel, J. S., Kainuma, M., Lamarque, J., ... van Vuuren, D. P. (2011a). The RCP greenhouse gas concentrations and their extensions from 1765 to 2300. *Climatic Change*, 109(1–2), 213.
- Meinshausen, M., Wigley, T., & Raper, S. (2011b). Emulating atmosphere–ocean and carbon cycle models with a simpler model, MAGICC6 – part 2: applications. *Atmospheric Chemistry and Physics*, 11(4), 1457–1471.
- Memmott, J., Craze, P. G., Waser, N. M., & Price, M. V. (2007). Global warming and the disruption of plant–pollinator interactions. *Ecology Letters*, 10(8), 710–717.

- Miles, L., Dunning, E., Doswald, N., & Osti, M. (2010). A safer bet for REDD+: review of the evidence on the relationship between biodiversity and the resilience of forest carbon stocks. Working Paper v2. *Multiple Benefits Series*, 10. Prepared on behalf of the UN-REDD Programme. UNEP World Conservation Monitoring Centre.
- Millar, R. J., Fuglested, J. S., Friedlingstein, P., Rogelj, J., Grubb, M. J., Matthews, H. D., ... Allen, M. R. (2017). Emission budgets and pathways consistent with limiting warming to 1.5°C. *Nature Geoscience*, 10(10), 741–747.
- Mora, F. (2017). A structural equation modeling approach for formalizing and evaluating ecological integrity in terrestrial ecosystems. *Ecological Informatics*, 41, 74–90.
- Morin, X., Fahse, L., Jactel, H., Scherer-Lorenzen, M., García-Valdés, R., & Bugmann, H. (2018). Long-term response of forest productivity to climate change is mostly driven by change in tree species composition. *Scientific Reports*, 8(1), 5627.
- Myhre, G., Highwood, E. J., Shine, K. P., & Stordal, F. (1998). New estimates of radiative forcing due to well mixed greenhouse gases. *Geophysical Research Letters*, 25(14), 2715–2718.
- Naeem, S. (2002). Ecosystem consequences of biodiversity loss: the evolution of a paradigm. *Ecology*, 83(6), 1537–1552.
- Newbold, T., Hudson, L. N., Arnell, A. P., Contu, S., De Palma, A., Ferrier, S., ... Purvis, A. (2016). Has land use pushed terrestrial biodiversity beyond the planetary boundary? A global assessment. *Science*, 353(6296), 288–291.
- Norberg, J. (2004). Biodiversity and ecosystem functioning: a complex adaptive systems approach. *Limnology and Oceanography*, 49(4 Pt 2), 1269–1277.
- Norberg, J., Swaney, D. P., Dushoff, J., Lin, J., Casagrandi, R., & Levin, S. A. (2001). Phenotypic diversity and ecosystem functioning in changing environments: a theoretical framework. *Proceedings of the National Academy of Sciences*, 98(20), 11376–11381.
- Parrish, J. D., Braun, D. P., & Unnasch, R. S. (2003). Are we conserving what we say we are? Measuring ecological integrity within protected areas. *BioScience*, 53(9), 851–860.
- Pecl, G. T., Araújo, M. B., Bell, J. D., Blanchard, J., Bonebrake, T. C., Chen, I.-C., ... Williams, S. E. (2017). Biodiversity redistribution under climate change: impacts on ecosystems and human well-being. *Science*, 355(6332), eaai9214.
- Pereira, H. M., Leadley, P. W., Proença, V., Alkemade, R., Scharlemann, J. P., Fernandez-Manjarrés, J. F., ... Walpole, M. (2010). Scenarios for global biodiversity in the 21st century. *Science*, 330(6010), 1496–1501.
- Pimm, S. L., Jenkins, C. N., Abell, R., Brooks, T. M., Gittleman, J. L., Joppa, L. N., ... Sexton, J. O. (2014). The biodiversity of species and their rates of extinction, distribution, and protection. *Science*, 344(6187), 1246752.
- Poorter, L., van der Sande, M., Thompson, J., Arets, E., Alarcón, A., Álvarez-Sánchez, J., ... Peña-Claros, M. (2015). Diversity enhances carbon storage in tropical forests. *Global Ecology and Biogeography*, 24(11), 1314–1328.
- Porada, P., Ekici, A., & Beer, C. (2016). Effects of bryophyte and lichen cover on permafrost soil temperature at large scale. *The Cryosphere*, 10(5), 2291–2315.
- Prentice, I. C., Bondeau, A., Cramer, W., Harrison, S. P., Hickler, T., Lucht, W., ... Sykes, M. T. (2007). Dynamic global vegetation modeling: quantifying terrestrial ecosystem responses to large-scale environmental change. In J. G. Canadell, D. E. Pataki, & L. F. Pitelka (Eds.), *Terrestrial Ecosystems in a Changing World* (pp. 175–192). Springer Berlin Heidelberg.
- Purves, D., Scharlemann, J. P., Harfoot, M., Newbold, T., Tittensor, D. P., Hutton, J., & Emmott, S. (2013). Ecosystems: time to model all life on Earth. *Nature*, 493(7432), 295–297.
- Raupach, M. R. (2013). The exponential eigenmodes of the carbon–climate system, and their implications for ratios of responses to forcings. *Earth System Dynamics*, 4(1), 31–49.
- Raupach, M. R., Canadell, J. G., Ciais, P., Friedlingstein, P., Rayner, P. J., & Trudinger, C. M. (2011). The relationship between peak warming and cumulative CO<sub>2</sub> emissions, and its use to quantify vulnerabilities in the carbon–climate–human system. *Tellus B*, 63(2), 145–164.
- Richardson, K., & Bendtsen, J. (2019). The vertical distribution of phytoplankton and primary production in relation to nutrient depth in the open ocean. *Marine Ecology Progress Series*, 620, 33–46.
- Ricketts, T. H., Watson, K. B., Koh, I., Ellis, A. M., Nicholson, C. C., Posner, S., ... Sonter, L. J. (2016). Disaggregating the evidence linking biodiversity and ecosystem services. *Nature Communications*, 7, 13106.
- Riebesell, U., Bach, L. T., Bellerby, R. G., Monsalve, J. R. B., Boxhammer, T., Czerny, J., ... Schulz, K. G. (2017). Competitive fitness of a predominant pelagic calcifier impaired by ocean acidification. *Nature Geoscience*, 10(1), 19–23.
- Sax, D. F., & Gaines, S. D. (2003). Species diversity: from global decreases to local increases. *Trends in Ecology & Evolution*, 18(11), 561–566.
- Schaefer, K., Lantuit, H., Romanovsky, V. E., Schuur, E. A., & Witt, R. (2014). The impact of the permafrost carbon feedback on global climate. *Environmental Research Letters*, 9(8), 085003.
- Schaphoff, S., von Bloh, W., Rammig, A., Thonicke, K., Biemans, H., Forkel, M., ... Waha, K. (2018). LPJmL4 – a dynamic global vegetation model with managed land – part 1: Model description. *Geoscientific Model Development*, 11(4), 1343–1375.
- Schellnhuber, H. J. (2010). Tragic triumph. *Climatic Change*, 100(1), 229–238.
- Schmidt, M. W., Torn, M. S., Abiven, S., Dittmar, T., Guggenberger, G., Jansens, I. A., ... Trumbore, S. E. (2011). Persistence of soil organic matter as an ecosystem property. *Nature*, 478(7367), 49–56.
- Schneider von Deimling, T., Grosse, G., Strauss, J., Schirrmeister, L., Morgenstern, A., Schaphoff, S., ... Boike, J. (2015). Observation-based modelling of permafrost carbon fluxes with accounting for deep carbon deposits and thermokarst activity. *Biogeosciences*, 12(11), 3469–3488.
- Scholes, R., & Biggs, R. (2005). A biodiversity intactness index. *Nature*, 434(7029), 45.
- Schuur, E., McGuire, A. D., Schädel, C., Grosse, G., Harden, J., Hayes, D., ... Vonk, J. E. (2015). Climate change and the permafrost carbon feedback. *Nature*, 520(7546), 171–179.
- Segschneider, J., & Bendtsen, J. (2013). Temperature-dependent remineralization in a warming ocean increases surface pCO<sub>2</sub> through changes in marine ecosystem composition. *Global Biogeochemical Cycles*, 27(4), 1214–1225.
- Settele, J., Scholes, R., Betts, R. A., Bunn, S., Leadley, P., Nepstad, D., ... Taboada, M. A. (2015). Terrestrial and inland water systems. In C. B. Field, V. R. Barros, D. J. Dokken, K. J. March, M. D. Mastandrea, T. E. Bilir, ... L. L. White (Eds.), *Climate Change 2014: Impacts, Adaptation, and Vulnerability. Part A: Global and Sectoral Aspects. Contribution of Working Group II to the Fifth Assessment Report of the Intergovernmental Panel on Climate Change* (pp. 271–359). Cambridge University Press.
- Sigman, D. M., & Boyle, E. A. (2000). Glacial/interglacial variations in atmospheric carbon dioxide. *Nature*, 407(6806), 859–869.
- Solomon, A. M., & Kirilenko, A. P. (1997). Climate change and terrestrial biomass: what if trees do not migrate? *Global Ecology and Biogeography Letters*, 6(2), 139–148.
- Steffen, W., Richardson, K., Rockström, J., Cornell, S. E., Fetzer, I., Bennett, E. M., ... Sörlin, S. (2015). Planetary boundaries: guiding human development on a changing planet. *Science*, 347(6223), 1259855.
- Steffen, W., Rockström, J., Richardson, K., Lenton, T. M., Folke, C., Liverman, D., ... Schellnhuber, H. J. (2018). Trajectories of the Earth system in the Anthropocene. *Proceedings of the National Academy of Sciences of the United States of America*, 115(33), 8252–8259.
- Sullivan, M. J., Talbot, J., Lewis, S. L., Phillips, O. L., Qie, L., Begne, S. K., ... Zomagho, L. (2017, January). Diversity and carbon storage across the tropical forest biome. *Scientific Reports*, 7, 39102.
- Svenning, J.-C., & Sandel, B. (2013). Disequilibrium vegetation dynamics under future climate change. *American Journal of Botany*, 100(7), 1266–1286.
- Thompson, I., Mackey, B., McNulty, S., & Mosseler, A. (2009). *Forest Resilience, Biodiversity, and Climate Change. A Synthesis of the Biodiversity/Resilience/Stability Relationship in Forest Ecosystems*. Technical Series no. 43. Secretariat of the Convention on Biological Diversity.
- Thompson, P. L., Isbell, F., Loreau, M., O'Connor, M. I., & Gonzalez, A. (2018). The strength of the biodiversity–ecosystem function relationship depends on spatial scale. *Proceedings. Biological Sciences*, 285(1880), 20180038.
- Van de Perre, F., Willig, M. R., Presley, S. J., Bapeamoni Andemwana, F., Beekman, H., Boeckx, P., ... Verheyen, E. (2018). Reconciling biodiversity and carbon stock conservation in an Afrotropical forest landscape. *Science Advances*, 4(3), eaar6603.

- van der Plas, F. (2019). Biodiversity and ecosystem functioning in naturally assembled communities. *Biological Reviews*, 94, 1220–1245.
- Van Minnen, J. G., Leemans, R., & Ihle, F. (2000). Defining the importance of including transient ecosystem responses to simulate C-cycle dynamics in a global change model. *Global Change Biology*, 6(6), 595–611.
- van Vuuren, D., Sala, O., & Pereira, H. (2006). The future of vascular plant diversity under four global scenarios. *Ecology and Society*, 11(2), 25.
- Visser, M. E. (2008). Keeping up with a warming world; assessing the rate of adaptation to climate change. *Proceedings. Biological Sciences*, 275(1635), 649–659.
- Weisser, W. W., Roscher, C., Meyer, S. T., Ebeling, A., Luo, G., Allan, E., ... Eisenhauer, N. (2017). Biodiversity effects on ecosystem functioning in a 15-year grassland experiment: patterns, mechanisms, and open questions. *Basic and Applied Ecology*, 23(C), 1–73.
- Wieczynski, D. J., Boyle, B., Buzzard, V., Duran, S. M., Henderson, A. N., Hulshof, C. M., ... Savage, V. M. (2019). Climate shapes and shifts functional biodiversity in forests worldwide. *Proceedings of the National Academy of Sciences of the United States of America*, 116(2), 587–592.
- Xia, J., Niu, S., Ciais, P., Janssens, I. A., Chen, J., Ammann, C., ... Luo, Y. (2015). Joint control of terrestrial gross primary productivity by plant phenology and physiology. *Proceedings of the National Academy of Sciences of the United States of America*, 112(9), 2788–2793.
- Yue, C., Ciais, P., Luyssaert, S., Li, W., McGrath, M. J., Chang, J., & Peng, S. (2018). Representing anthropogenic gross land use change, wood harvest, and forest age dynamics in a global vegetation model ORCHIDEE-MICT v8. 4.2. *Geoscientific Model Development*, 11(1), 409–428.
- Zhang, T., Niinemets, Ü., Sheffield, J., & Lichstein, J. W. (2018). Shifts in tree functional composition amplify the response of forest biomass to climate. *Nature*, 556, 99–102.
- Zickfeld, K., Eby, M., Matthews, H. D., Schmittner, A., & Weaver, A. J. (2011). Nonlinearity of carbon cycle feedbacks. *Journal of Climate*, 24(16), 4255–4275.